

Product datasheet for **TA330310**

beta 2 Adrenergic Receptor (ADRB2) Rabbit Polyclonal Antibody

Product data:

Product Type:	Primary Antibodies
Applications:	WB
Recommended Dilution:	WB
Reactivity:	Human
Host:	Rabbit
Isotype:	IgG
Clonality:	Polyclonal
Immunogen:	The immunogen for anti-ADRB2 antibody: synthetic peptide directed towards the middle region of human ADRB2. Synthetic peptide located within the following region: TGEQSGYHVEQEKENKLLCEDLPGTEDFVGHQGTVPDSDNIDSQGRNCSTN
Formulation:	Liquid. Purified antibody supplied in 1x PBS buffer with 0.09% (w/v) sodium azide and 2% sucrose. <i>Note that this product is shipped as lyophilized powder to China customers.</i>
Conjugation:	Unconjugated
Storage:	Store at -20°C as received.
Stability:	Stable for 12 months from date of receipt.
Predicted Protein Size:	46 kDa
Gene Name:	adrenoceptor beta 2
Database Link:	NP_000015 Entrez Gene 154 Human P07550



[View online »](#)

Background:

This protein is beta-2-adrenergic receptor which is a member of the G protein-coupled receptor superfamily. This receptor is directly associated with one of its ultimate effectors, the class C L-type calcium channel Ca(V)1.2. This receptor-channel complex also contains a G protein, an adenylyl cyclase, cAMP-dependent kinase, and the counterbalancing phosphatase, PP2A. The assembly of the signaling complex provides a mechanism that ensures specific and rapid signaling by this G protein-coupled receptor. This gene encodes beta-2-adrenergic receptor which is a member of the G protein-coupled receptor superfamily. This receptor is directly associated with one of its ultimate effectors, the class C L-type calcium channel Ca(V)1.2. This receptor-channel complex also contains a G protein, an adenylyl cyclase, cAMP-dependent kinase, and the counterbalancing phosphatase, PP2A. The assembly of the signaling complex provides a mechanism that ensures specific and rapid signaling by this G protein-coupled receptor. This gene is intronless. Different polymorphic forms, point mutations, and/or downregulation of this gene are associated with nocturnal asthma, obesity and type 2 diabetes. Publication Note: This RefSeq record includes a subset of the publications that are available for this gene. Please see the Entrez Gene record to access additional publications.

Synonyms:

ADRB2R; ADRBR; B2AR; BAR; BETA2AR

Note:

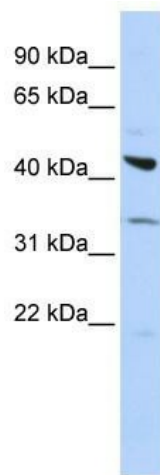
Immunogen sequence homology: Human: 100%

Protein Families:

Druggable Genome, GPCR, Transmembrane

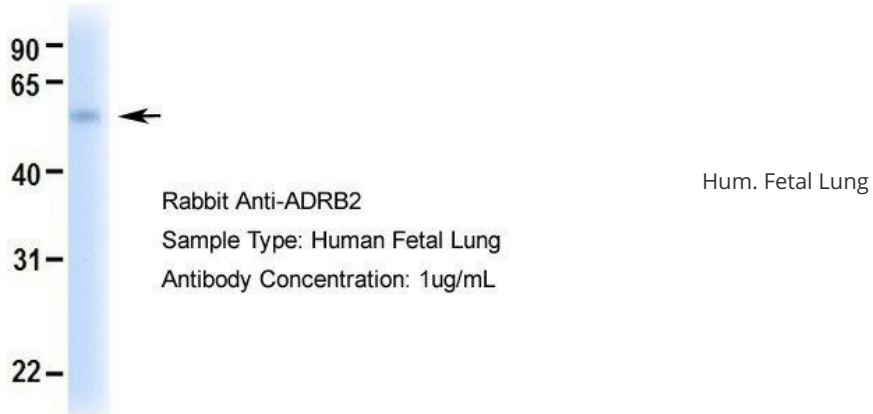
Protein Pathways:

Calcium signaling pathway, Endocytosis, Neuroactive ligand-receptor interaction

Product images:

WB Suggested Anti-ADRB2 Antibody Titration:
0.2-1 ug/ml; ELISA Titer: 1:62500; Positive Control:
OVCAR-3 cell lysate

ADRB2



ADRB2

