

## Product datasheet for **TA330309**

### Cytokeratin 15 (KRT15) Rabbit Polyclonal Antibody

#### Product data:

Product Type:	Primary Antibodies
Applications:	IHC, WB
Recommended Dilution:	WB, IHC
Reactivity:	Human
Host:	Rabbit
Isotype:	IgG
Clonality:	Polyclonal
Immunogen:	The immunogen for anti-KRT15 antibody: synthetic peptide directed towards the C terminal of human KRT15. Synthetic peptide located within the following region: RSLLEGQDAKMAGIGIREASSGGGGSSSNFHINVEESVDGQVSSHKREI
Formulation:	Liquid. Purified antibody supplied in 1x PBS buffer with 0.09% (w/v) sodium azide and 2% sucrose. <i>Note that this product is shipped as lyophilized powder to China customers.</i>
Conjugation:	Unconjugated
Storage:	Store at -20°C as received.
Stability:	Stable for 12 months from date of receipt.
Predicted Protein Size:	49 kDa
Gene Name:	keratin 15
Database Link:	<a href="#">NP_002266</a> <a href="#">Entrez Gene 3866 Human P19012</a>



[View online »](#)

**Background:**

The protein encoded by KRT15 is a member of the keratin gene family. The keratins are intermediate filament proteins responsible for the structural integrity of epithelial cells and are subdivided into cytokeratins and hair keratins. Most of the type I cytokeratins consist of acidic proteins which are arranged in pairs of heterotypic keratin chains and are clustered in a region on chromosome 17q21.2. The protein encoded by this gene is a member of the keratin gene family. The keratins are intermediate filament proteins responsible for the structural integrity of epithelial cells and are subdivided into cytokeratins and hair keratins. Most of the type I cytokeratins consist of acidic proteins which are arranged in pairs of heterotypic keratin chains and are clustered in a region on chromosome 17q21.2. Publication Note: This RefSeq record includes a subset of the publications that are available for this gene. Please see the Entrez Gene record to access additional publications.

**Synonyms:**

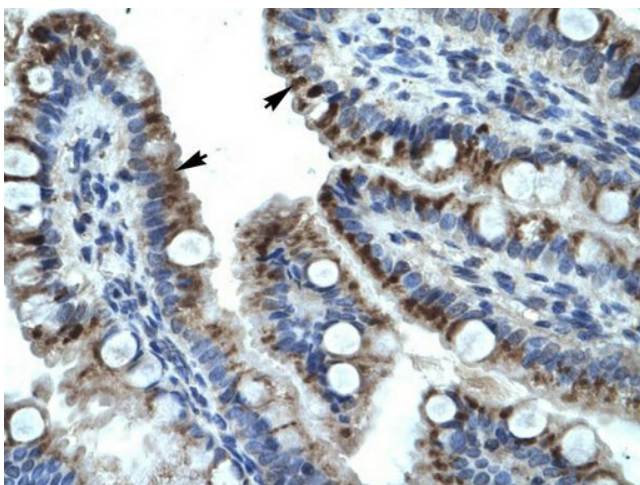
CK15; K1CO; K15

**Note:**

Immunogen sequence homology: Human: 100%; Bovine: 86%; Mouse: 86%

**Product images:**

WB Suggested Anti-KRT15 Antibody Titration: 0.2-1 ug/ml; ELISA Titer: 1:62500; Positive Control: Human brain



WB Suggested Anti-KRT15 Antibody Titration: 4.0-8.0; Positive Control: Human Intestine