

## Product datasheet for **TA330307**

### ODF3L2 Rabbit Polyclonal Antibody

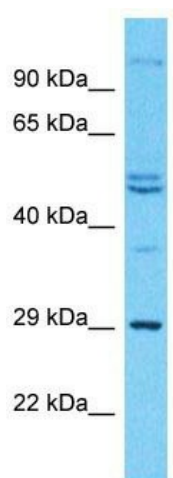
#### Product data:

Product Type:	Primary Antibodies
Applications:	WB
Recommended Dilution:	WB
Reactivity:	Human
Host:	Rabbit
Isotype:	IgG
Clonality:	Polyclonal
Immunogen:	The immunogen for Anti-ODF3L2 antibody is: synthetic peptide directed towards the C-terminal region of Human ODF3L2. Synthetic peptide located within the following region: IPGPGQYDSPDANTYRQRLPAFTMLGRPRAPRPLEETPGPGAHCPEQTV
Formulation:	Liquid. Purified antibody supplied in 1x PBS buffer with 0.09% (w/v) sodium azide and 2% sucrose. <i>Note that this product is shipped as lyophilized powder to China customers.</i>
Conjugation:	Unconjugated
Storage:	Store at -20°C as received.
Stability:	Stable for 12 months from date of receipt.
Predicted Protein Size:	31 kDa
Gene Name:	outer dense fiber of sperm tails 3 like 2
Database Link:	<a href="#">NP_872383</a> <a href="#">Entrez Gene 284451 Human</a> <a href="#">Q3SX64</a>
Background:	The function of this protein remains unknown.
Synonyms:	C19orf19
Note:	Immunogen sequence homology: Human: 100%; Dog: 86%; Rat: 86%; Mouse: 86%; Bovine: 86%; Horse: 77%



[View online »](#)

## Product images:



Host: Rabbit

Target Name: ODF3L2

Sample Tissue: 786-0 Cell Lysate

Antibody Dilution: 1.0µg/ml

Host: Rabbit; Target Name: ODF3L2; Sample  
Tissue: 786-0 Whole Cell lysates; Antibody  
Dilution: 1.0ug/ml