

Product datasheet for **TA330306**

ARMC1 Rabbit Polyclonal Antibody

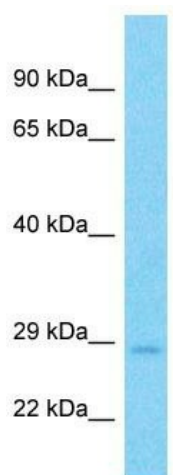
Product data:

Product Type:	Primary Antibodies
Applications:	WB
Recommended Dilution:	WB
Reactivity:	Human
Host:	Rabbit
Isotype:	IgG
Clonality:	Polyclonal
Immunogen:	The immunogen for Anti-ARMC1 antibody is: synthetic peptide directed towards the C-terminal region of Human ARMC1. Synthetic peptide located within the following region: VEQNTELPDYLPEDSPTKEQDKAVSRVGSHPGASWLSTAAANFLSRSF
Formulation:	Liquid. Purified antibody supplied in 1x PBS buffer with 0.09% (w/v) sodium azide and 2% sucrose.
Conjugation:	Unconjugated
Storage:	Store at -20°C as received.
Stability:	Stable for 12 months from date of receipt.
Predicted Protein Size:	31 kDa
Gene Name:	armadillo repeat containing 1
Database Link:	NP_060590 Entrez Gene 55156 Human Q9NVT9
Background:	The function of this protein remains unknown.
Synonyms:	Arcp
Note:	Immunogen sequence homology: Dog: 100%; Pig: 100%; Rat: 100%; Horse: 100%; Human: 100%; Mouse: 100%; Bovine: 100%; Rabbit: 100%; Guinea pig: 100%; Zebrafish: 85%



[View online »](#)

Product images:



Host: Rabbit
Target Name: ARMC1
Sample Tissue: 786-0 Cell Lysate
Antibody Dilution: 1.0µg/ml

Host: Rabbit; Target Name: ARMC1; Sample
Tissue: 786-0 Whole Cell lysates; Antibody
Dilution: 1.0ug/ml