

Product datasheet for **TA330305**

KBTBD11 Rabbit Polyclonal Antibody

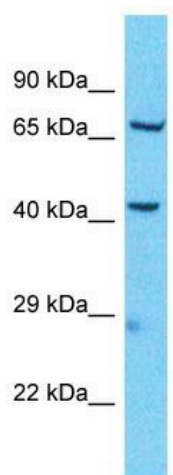
Product data:

Product Type:	Primary Antibodies
Applications:	WB
Recommended Dilution:	WB
Reactivity:	Human
Host:	Rabbit
Isotype:	IgG
Clonality:	Polyclonal
Immunogen:	The immunogen for Anti-KBTBD11 antibody is: synthetic peptide directed towards the middle region of Human KBTBD11. Synthetic peptide located within the following region: LGPAGERAGSRPQSPSGDADARGDAAVYCFHAAAGEWRELTRLPEGAPAR
Formulation:	Liquid. Purified antibody supplied in 1x PBS buffer with 0.09% (w/v) sodium azide and 2% sucrose. <i>Note that this product is shipped as lyophilized powder to China customers.</i>
Conjugation:	Unconjugated
Storage:	Store at -20°C as received.
Stability:	Stable for 12 months from date of receipt.
Predicted Protein Size:	70 kDa
Gene Name:	kelch repeat and BTB domain containing 11
Database Link:	NP_055682 Entrez Gene 9920 Human O94819
Background:	The function of this protein remains unknown.
Synonyms:	KLHDC7C
Note:	Immunogen sequence homology: Human: 100%; Pig: 93%; Guinea pig: 93%; Rat: 86%; Mouse: 86%; Bovine: 79%



[View online »](#)

Product images:



Host: Rabbit

Target Name: KBTBD11

Sample Tissue: Jurkat Cell Lysate

Antibody Dilution: 1.0 μ g/ml

Host: Rabbit; Target Name: KBTBD11; Sample
Tissue: Jurkat Whole Cell lysates; Antibody
Dilution: 1.0ug/ml