

## Product datasheet for **TA330303**

### DC2L1 (DYNC2LI1) Rabbit Polyclonal Antibody

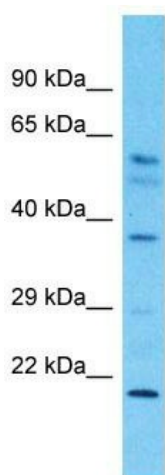
#### Product data:

Product Type:	Primary Antibodies
Applications:	WB
Recommended Dilution:	WB
Reactivity:	Human
Host:	Rabbit
Isotype:	IgG
Clonality:	Polyclonal
Immunogen:	The immunogen for Anti-DYNC2LI1 antibody is: synthetic peptide directed towards the N-terminal region of Human DYNC2LI1. Synthetic peptide located within the following region: LDRDEPPKPTLALEYTYGRRRAKGHNTPKDIAHFWELGGGTSLLDLISIP
Formulation:	Liquid. Purified antibody supplied in 1x PBS buffer with 0.09% (w/v) sodium azide and 2% sucrose. <i>Note that this product is shipped as lyophilized powder to China customers.</i>
Conjugation:	Unconjugated
Storage:	Store at -20°C as received.
Stability:	Stable for 12 months from date of receipt.
Predicted Protein Size:	22 kDa
Gene Name:	dynein cytoplasmic 2 light intermediate chain 1
Database Link:	<a href="#">NP_056337</a> <a href="#">Entrez Gene 51626 Human</a> <a href="#">Q8TCX1</a>
Background:	DYNC2LI1 may function as a motor for intraflagellar retrograde transport and functions in cilia biogenesis.
Synonyms:	CGI-60; D2LIC; LIC3; SRTD15
Note:	Immunogen sequence homology: Pig: 100%; Rat: 100%; Human: 100%; Rabbit: 100%; Guinea pig: 100%; Dog: 93%; Horse: 86%; Mouse: 86%; Bovine: 86%; Zebrafish: 86%



[View online »](#)

## Product images:



Host: Rabbit  
Target Name: DYNC2LI1  
Sample Tissue: Fetal Kidney Lysate  
Antibody Dilution: 1.0 $\mu$ g/ml

Host: Rabbit; Target Name: DYNC2LI1; Sample Tissue: Fetal Kidney lysates; Antibody Dilution: 1.0 $\mu$ g/ml