

Product datasheet for **TA330302**

S100Z Rabbit Polyclonal Antibody

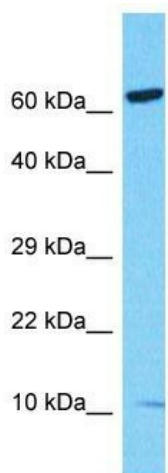
Product data:

| | |
|-------------------------|---|
| Product Type: | Primary Antibodies |
| Applications: | WB |
| Recommended Dilution: | WB |
| Reactivity: | Human |
| Host: | Rabbit |
| Isotype: | IgG |
| Clonality: | Polyclonal |
| Immunogen: | The immunogen for Anti-S100Z antibody is: synthetic peptide directed towards the N-terminal region of Human S100Z. Synthetic peptide located within the following region: MPTQLEMAMDTMIRIFHRYSGKERKRFKLSKGELKLLLQRELTEFLSCQK |
| Formulation: | Liquid. Purified antibody supplied in 1x PBS buffer with 0.09% (w/v) sodium azide and 2% sucrose. |
| Conjugation: | Unconjugated |
| Storage: | Store at -20°C as received. |
| Stability: | Stable for 12 months from date of receipt. |
| Predicted Protein Size: | 10 kDa |
| Gene Name: | S100 calcium binding protein Z |
| Database Link: | NP_570128 Entrez Gene 170591 Human Q8WXG8 |
| Background: | Members of the S100 protein family contain 2 calcium-binding EF-hands and exhibit cell-type specific expression patterns. For additional background information on S100 proteins, see MIM 114085. |
| Synonyms: | Gm625; S100-zeta |
| Note: | Immunogen sequence homology: Human: 100% |



[View online »](#)

Product images:



Host: Rabbit
Target Name: S100Z
Sample Tissue: Hela Cell Lysate
Antibody Dilution: 1.0 μ g/ml

Host: Rabbit; Target Name: S100Z; Sample
Tissue: Hela Whole Cell lysates; Antibody Dilution:
1.0 μ g/ml