

Product datasheet for **TA330301**

POLR1C Rabbit Polyclonal Antibody

Product data:

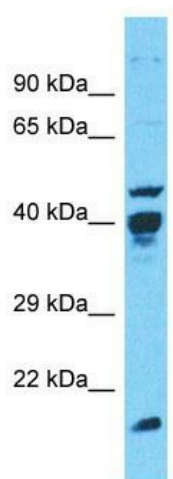
Product Type:	Primary Antibodies
Applications:	WB
Recommended Dilution:	WB
Reactivity:	Human
Host:	Rabbit
Isotype:	IgG
Clonality:	Polyclonal
Immunogen:	The immunogen for Anti-POLR1C antibody is: synthetic peptide directed towards the N-terminal region of Human POLR1C. Synthetic peptide located within the following region: VRNVHTTDFPGNYSYGYDDAWDQDRFEKNFRVDVHMDENSLEFDMVGIDA
Formulation:	Liquid. Purified antibody supplied in 1x PBS buffer with 0.09% (w/v) sodium azide and 2% sucrose. <i>Note that this product is shipped as lyophilized powder to China customers.</i>
Conjugation:	Unconjugated
Storage:	Store at -20°C as received.
Stability:	Stable for 12 months from date of receipt.
Predicted Protein Size:	15 kDa
Gene Name:	polymerase (RNA) I subunit C
Database Link:	NP_976035 Entrez Gene 9533 Human O15160
Background:	The function of this protein remains unknown.
Synonyms:	RPA5; RPA39; RPA40; RPAC1; TCS3
Note:	Immunogen sequence homology: Dog: 100%; Pig: 100%; Rat: 100%; Horse: 100%; Human: 100%; Bovine: 100%; Rabbit: 100%; Guinea pig: 100%; Goat: 93%; Mouse: 86%; Zebrafish: 82%
Protein Families:	Druggable Genome, Stem cell - Pluripotency, Transcription Factors



[View online »](#)

Protein Pathways: Cytosolic DNA-sensing pathway, Metabolic pathways, Purine metabolism, Pyrimidine metabolism, RNA polymerase

Product images:



Host: Rabbit

Target Name: POLR1C

Sample Tissue: Jurkat Cell Lysate

Antibody Dilution: 1.0µg/ml

Host: Rabbit; Target Name: POLR1C; Sample Tissue: Jurkat Whole Cell lysates; Antibody Dilution: 1.0ug/ml