

Product datasheet for **TA330300**

ZFP64 Rabbit Polyclonal Antibody

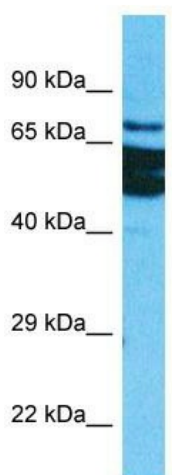
Product data:

Product Type:	Primary Antibodies
Applications:	WB
Recommended Dilution:	WB
Reactivity:	Human
Host:	Rabbit
Isotype:	IgG
Clonality:	Polyclonal
Immunogen:	The immunogen for Anti-ZFP64 antibody is: synthetic peptide directed towards the C-terminal region of Human ZFP64. Synthetic peptide located within the following region: SFHCDICDASFMREDSLRSHKRQHSEYSESKNSDVTVLQFQIDPSKQPAT
Formulation:	Liquid. Purified antibody supplied in 1x PBS buffer with 0.09% (w/v) sodium azide and 2% sucrose. <i>Note that this product is shipped as lyophilized powder to China customers.</i>
Conjugation:	Unconjugated
Storage:	Store at -20°C as received.
Stability:	Stable for 12 months from date of receipt.
Predicted Protein Size:	74 kDa
Gene Name:	ZFP64 zinc finger protein
Database Link:	NP_955459 Entrez Gene 55734 Human Q9NTW7
Background:	ZFP64 may be involved in transcriptional regulation.
Synonyms:	ZNF338
Note:	Immunogen sequence homology: Human: 100%; Pig: 93%; Rat: 93%; Guinea pig: 93%; Dog: 86%; Mouse: 86%
Protein Families:	Transcription Factors



[View online »](#)

Product images:



Host: Rabbit

Target Name: ZFP64

Sample Tissue: HepG2 Cell Lysate

Antibody Dilution: 1.0µg/ml

Host: Rabbit; Target Name: ZFP64; Sample Tissue: HepG2 Whole Cell lysates; Antibody Dilution: 1.0ug/ml