

## Product datasheet for **TA330299**

### TRF4 2 (PAPD5) Rabbit Polyclonal Antibody

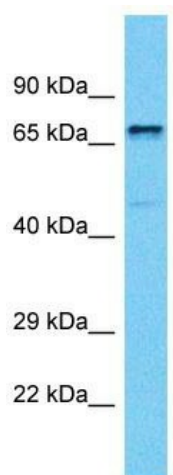
#### Product data:

Product Type:	Primary Antibodies
Applications:	WB
Recommended Dilution:	WB
Reactivity:	Human
Host:	Rabbit
Isotype:	IgG
Clonality:	Polyclonal
Immunogen:	The immunogen for Anti-PAPD5 antibody is: synthetic peptide directed towards the C-terminal region of Human PAPD5. Synthetic peptide located within the following region: SSSKGFQGTQTSHGSLMTNKQHQGKSNQYYHGKKRKHKRDAPLSDLCR
Formulation:	Liquid. Purified antibody supplied in 1x PBS buffer with 0.09% (w/v) sodium azide and 2% sucrose.
Conjugation:	Unconjugated
Storage:	Store at -20°C as received.
Stability:	Stable for 12 months from date of receipt.
Predicted Protein Size:	76 kDa
Gene Name:	PAP associated domain containing 5
Database Link:	<a href="#">NP_071892</a> <a href="#">Entrez Gene 64282 Human</a> <a href="#">Q8NDF8</a>
Background:	PAPD5 plays a role in replication-dependent histone mRNA degradation. It may be involved in the terminal uridylation of mature histone mRNAs before their degradation is initiated. DNA polymerase, probably involved in DNA repair. It may play a role in sister chromatid cohesion.
Synonyms:	FLJ40270; PAP associated domain containing 5; topoisomerase-related function protein 4-2; TRF4-2
Note:	Immunogen sequence homology: Dog: 100%; Pig: 100%; Rat: 100%; Horse: 100%; Human: 100%; Bovine: 100%; Guinea pig: 100%; Mouse: 92%



[View online »](#)

## Product images:



Host: Rabbit

Target Name: PAPD5

Sample Tissue: MCF7 Cell Lysate

Antibody Dilution: 1.0µg/ml

Host: Rabbit; Target Name: PAPD5; Sample Tissue: MCF7 Whole Cell lysates; Antibody Dilution: 1.0ug/ml