

Product datasheet for **TA330298**

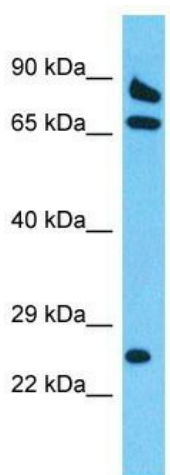
VPS26C Rabbit Polyclonal Antibody

Product data:

Product Type:	Primary Antibodies
Applications:	WB
Recommended Dilution:	WB
Reactivity:	Human
Host:	Rabbit
Isotype:	IgG
Clonality:	Polyclonal
Immunogen:	The immunogen for Anti-DSCR3 antibody is: synthetic peptide directed towards the middle region of Human DSCR3. Synthetic peptide located within the following region: SAPQKKGKFTSPVDFTITPETLQNVKERALLPKFLLRGHLNSTNCVITQP
Formulation:	Liquid. Purified antibody supplied in 1x PBS buffer with 0.09% (w/v) sodium azide and 2% sucrose. <i>Note that this product is shipped as lyophilized powder to China customers.</i>
Conjugation:	Unconjugated
Storage:	Store at -20°C as received.
Stability:	Stable for 12 months from date of receipt.
Predicted Protein Size:	27 kDa
Gene Name:	DSCR3 arrestin fold containing
Database Link:	NP_006043 Entrez Gene 10311 Human O14972
Background:	The function of this protein remains unknown.
Synonyms:	DCRA; DSCRA
Note:	Immunogen sequence homology: Human: 100%; Dog: 93%; Pig: 93%; Rat: 93%; Horse: 93%; Mouse: 93%; Guinea pig: 93%; Bovine: 86%; Rabbit: 86%



[View online »](#)

Product images:

Host: Rabbit
Target Name: DSCR3
Sample Tissue: 721_B Cell Lysate
Antibody Dilution: 1.0 μ g/ml

Host: Rabbit; Target Name: DSCR3; Sample
Tissue: 721_B Whole Cell lysates; Antibody
Dilution: 1.0ug/ml