

Product datasheet for **TA330297**

MED30 Rabbit Polyclonal Antibody

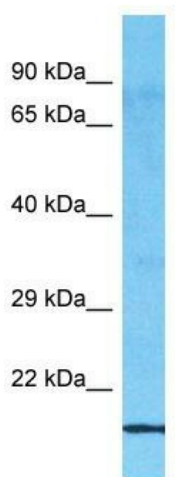
Product data:

Product Type:	Primary Antibodies
Applications:	WB
Recommended Dilution:	WB
Reactivity:	Human
Host:	Rabbit
Isotype:	IgG
Clonality:	Polyclonal
Immunogen:	The immunogen for Anti-MED30 antibody is: synthetic peptide directed towards the C-terminal region of Human MED30. Synthetic peptide located within the following region: GGMDPIPVEQLIPYVEEDGSKNDDRAGPPRFASEERREIAEVNKKLKQKN
Formulation:	Liquid. Purified antibody supplied in 1x PBS buffer with 0.09% (w/v) sodium azide and 2% sucrose. <i>Note that this product is shipped as lyophilized powder to China customers.</i>
Conjugation:	Unconjugated
Storage:	Store at -20°C as received.
Stability:	Stable for 12 months from date of receipt.
Predicted Protein Size:	19 kDa
Gene Name:	mediator complex subunit 30
Database Link:	NP_542382 Entrez Gene 90390 Human Q96HR3
Background:	The multiprotein TRAP/Mediator complex facilitates gene expression through a wide variety of transcriptional activators. MED30 is a component of this complex that appears to be metazoan specific.
Synonyms:	MED30S; THRAP6; TRAP25
Note:	Immunogen sequence homology: Dog: 100%; Pig: 100%; Rat: 100%; Horse: 100%; Human: 100%; Mouse: 100%; Rabbit: 100%; Bovine: 93%; Guinea pig: 93%
Protein Families:	Druggable Genome, Transcription Factors



[View online »](#)

Product images:



Host: Rabbit

Target Name: MED30

Sample Tissue: ACHN Cell Lysate

Antibody Dilution: 1.0µg/ml

Host: Rabbit; Target Name: MED30; Sample
Tissue: ACHN Whole Cell lysates; Antibody
Dilution: 1.0ug/ml