

Product datasheet for **TA330293**

alpha 1 Spectrin (SPTA1) Rabbit Polyclonal Antibody

Product data:

Product Type:	Primary Antibodies
Applications:	WB
Recommended Dilution:	WB
Reactivity:	Human
Host:	Rabbit
Isotype:	IgG
Clonality:	Polyclonal
Immunogen:	The immunogen for Anti-SPTA1 antibody is: synthetic peptide directed towards the N-terminal region of Human SPTA1. Synthetic peptide located within the following region: DELSGWMNEKTAAINADELPTDVAGGEVLLDRHQHKHEIDSYDDRFQSA
Formulation:	Liquid. Purified antibody supplied in 1x PBS buffer with 0.09% (w/v) sodium azide and 2% sucrose. <i>Note that this product is shipped as lyophilized powder to China customers.</i>
Conjugation:	Unconjugated
Storage:	Store at -20°C as received.
Stability:	Stable for 12 months from date of receipt.
Predicted Protein Size:	266 kDa
Gene Name:	spectrin alpha, erythrocytic 1
Database Link:	NP_003117 Entrez Gene 6708 Human P02549



[View online »](#)

Background:

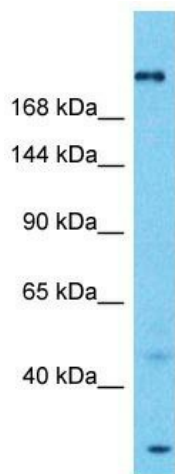
Spectrin is an actin crosslinking and molecular scaffold protein that links the plasma membrane to the actin cytoskeleton, and functions in the determination of cell shape, arrangement of transmembrane proteins, and organization of organelles. It is a tetramer made up of alpha-beta dimers linked in a head-to-head arrangement. This gene is one member of a family of alpha-spectrin genes. The encoded protein is primarily composed of 22 spectrin repeats which are involved in dimer formation. It forms weaker tetramer interactions than non-erythrocytic alpha spectrin, which may increase the plasma membrane elasticity and deformability of red blood cells. Mutations in this gene result in a variety of hereditary red blood cell disorders, including elliptocytosis type 2, pyropoikilocytosis, and spherocytic hemolytic anemia.

Synonyms:

EL2; HPP; HS3; SPH3; SPTA

Note:

Immunogen sequence homology: Rat: 100%; Horse: 100%; Human: 100%; Mouse: 100%; Bovine: 100%; Pig: 93%; Guinea pig: 93%; Rabbit: 92%

Product images:

Host: Rabbit
Target Name: SPTA1
Sample Tissue: Fetal Liver Lysate
Antibody Dilution: 1.0µg/ml

Host: Rabbit; Target Name: SPTA1; Sample Tissue: Fetal Liver lysates; Antibody Dilution: 1.0ug/ml