

Product datasheet for **TA330292**

SORBS2 Rabbit Polyclonal Antibody

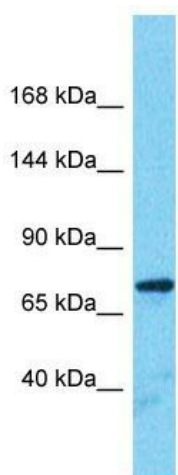
Product data:

Product Type:	Primary Antibodies
Applications:	WB
Recommended Dilution:	WB
Reactivity:	Human
Host:	Rabbit
Isotype:	IgG
Clonality:	Polyclonal
Immunogen:	The immunogen for Anti-SORBS2 antibody is: synthetic peptide directed towards the middle region of Human SORBS2. Synthetic peptide located within the following region: LRPRDRSSTEKHDWDPPDRKVDTRKFRSEPRSFIFEYEPGKSSILQHERPA
Formulation:	Liquid. Purified antibody supplied in 1x PBS buffer with 0.09% (w/v) sodium azide and 2% sucrose. <i>Note that this product is shipped as lyophilized powder to China customers.</i>
Conjugation:	Unconjugated
Storage:	Store at -20°C as received.
Stability:	Stable for 12 months from date of receipt.
Predicted Protein Size:	70 kDa
Gene Name:	sorbin and SH3 domain containing 2
Database Link:	NP_001139142 Entrez Gene 8470 Human O94875
Background:	SORBS2 is an adapter protein that plays a role in the assembling of signaling complexes, being a link between ABL kinases and actin cytoskeleton. It can form complex with ABL1 and CBL, thus promoting ubiquitination and degradation of ABL1 or with AKT1 and PAK1, thus mediating AKT1-mediated activation of PAK1.
Synonyms:	ARGBP2; PRO0618
Note:	Immunogen sequence homology: Dog: 100%; Pig: 100%; Rat: 100%; Horse: 100%; Human: 100%; Bovine: 100%; Guinea pig: 100%; Mouse: 92%; Rabbit: 86%



[View online »](#)

Product images:



Host: Rabbit

Target Name: SORBS2

Sample Tissue: Fetal Kidney Lysate

Antibody Dilution: 1.0 μ g/ml

Host: Rabbit; Target Name: SORBS2; Sample Tissue: Fetal Kidney lysates; Antibody Dilution: 1.0ug/ml