

Product datasheet for **TA330291**

SIRT6 Rabbit Polyclonal Antibody

Product data:

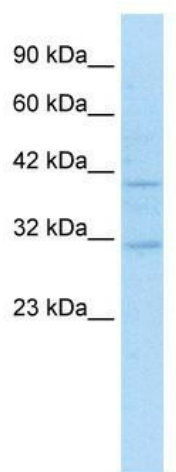
Product Type:	Primary Antibodies
Applications:	WB
Recommended Dilution:	WB
Reactivity:	Human, Mouse
Host:	Rabbit
Isotype:	IgG
Clonality:	Polyclonal
Immunogen:	The immunogen for anti-SIRT6 antibody: synthetic peptide directed towards the N terminal of human SIRT6. Synthetic peptide located within the following region: STASGIPDFRGPVWVWMEERGLAPKFDITTFESARPTQTHMALVQLERVG
Formulation:	Liquid. Purified antibody supplied in 1x PBS buffer with 0.09% (w/v) sodium azide and 2% sucrose. <i>Note that this product is shipped as lyophilized powder to China customers.</i>
Conjugation:	Unconjugated
Storage:	Store at -20°C as received.
Stability:	Stable for 12 months from date of receipt.
Predicted Protein Size:	39 kDa
Gene Name:	sirtuin 6
Database Link:	NP_057623 Entrez Gene 50721 Mouse Entrez Gene 51548 Human Q8N6T7
Background:	SIRT6 encodes a member of the sirtuin family of proteins, homologs to the yeast Sir2 protein. Studies suggest that the human sirtuins may function as intracellular regulatory proteins with mono-ADP-ribosyltransferase activity. The protein encoded by SIRT6 is included in class IV of the sirtuin family.
Synonyms:	SIR2L6
Note:	Immunogen sequence homology: Dog: 100%; Pig: 100%; Rat: 100%; Human: 100%; Mouse: 100%; Guinea pig: 93%; Horse: 92%; Bovine: 92%



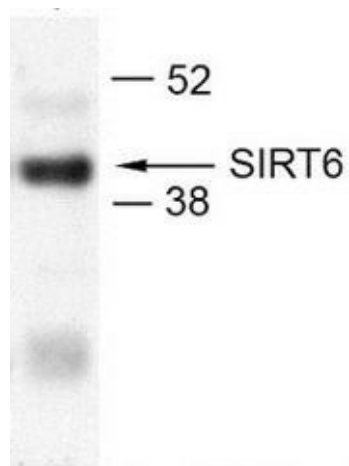
[View online »](#)

Protein Families: Druggable Genome, Transcription Factors

Product images:



WB Suggested Anti-SIRT6 Antibody Titration:
1.25ug/ml; Positive Control: HepG2 cell lysate



U2OS