

Product datasheet for **TA330285**

TAB2 Rabbit Polyclonal Antibody

Product data:

Product Type:	Primary Antibodies
Applications:	IHC, WB
Recommended Dilution:	WB, IHC
Reactivity:	Human
Host:	Rabbit
Isotype:	IgG
Clonality:	Polyclonal
Immunogen:	The immunogen for anti-MAP3K7IP2 antibody: synthetic peptide directed towards the N terminal of human MAP3K7IP2. Synthetic peptide located within the following region: QKFPEVPEVVSRCLQNNNLDACCAVLSQESTRYLYGEGDLNFSDDSG
Formulation:	Liquid. Purified antibody supplied in 1x PBS buffer with 0.09% (w/v) sodium azide and 2% sucrose. <i>Note that this product is shipped as lyophilized powder to China customers.</i>
Conjugation:	Unconjugated
Storage:	Store at -20°C as received.
Stability:	Stable for 12 months from date of receipt.
Predicted Protein Size:	76 kDa
Gene Name:	TGF-beta activated kinase 1/MAP3K7 binding protein 2
Database Link:	NP_055908 Entrez Gene 23118 Human Q9NYJ8
Background:	MAP3K7IP2 is an activator of MAP3K7/TAK1, which is required for for the IL-1 induced activation of NF- κ B and MAPK8/JNK. This protein forms a kinase complex with TRAF6, MAP3K7 and TAB1, thus serving as an adaptor linking MAP3K7 and TRAF6. This protein, TAB1, and MAP3K7 also participate in the signal transduction induced by TNFSF11/RANKL through the activation of the receptor activator of NF- κ B (TNFRSF11A/RANK), which may regulate the development and function of osteoclasts.
Synonyms:	CHTD2; MAP3K7IP2; TAB-2



[View online »](#)

Note: Immunogen sequence homology: Dog: 100%; Pig: 100%; Rat: 100%; Horse: 100%; Human: 100%; Mouse: 100%; Bovine: 100%; Rabbit: 100%; Guinea pig: 100%

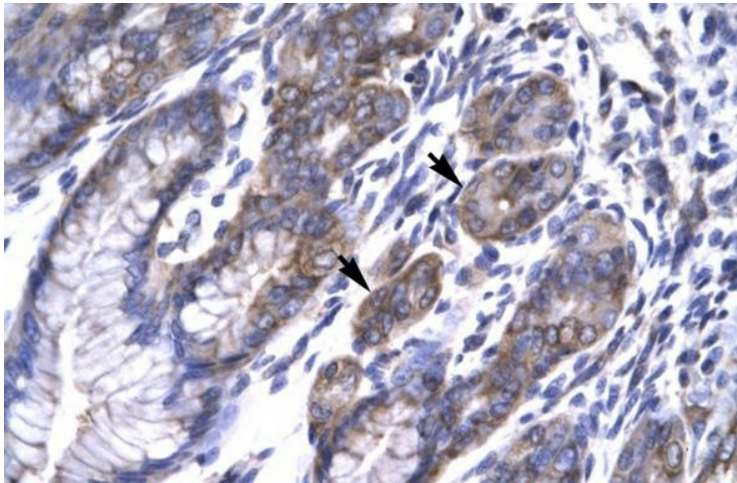
Protein Families: Druggable Genome

Protein Pathways: MAPK signaling pathway, NOD-like receptor signaling pathway, Toll-like receptor signaling pathway

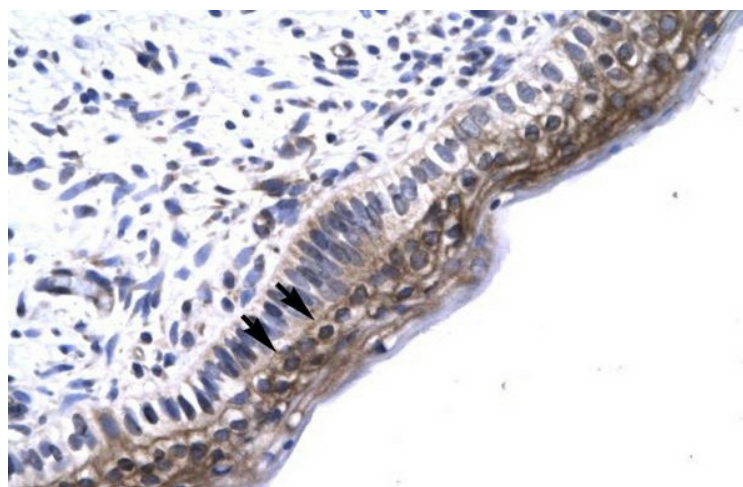
Product images:



WB Suggested Anti-MAP3K71P2 Antibody
 Titration: 0.2-1 ug/ml; Positive Control: HepG2 cell lysate
 TAB2 is strongly supported by BioGPS gene expression data to be expressed in Human HepG2 cells



Human Stomach



Human Spermatophore