

Product datasheet for **TA330284**

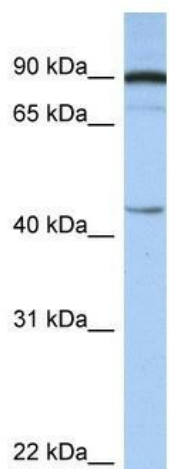
PSMD6 Rabbit Polyclonal Antibody

Product data:

| | |
|-------------------------|---|
| Product Type: | Primary Antibodies |
| Applications: | WB |
| Recommended Dilution: | WB |
| Reactivity: | Human |
| Host: | Rabbit |
| Isotype: | IgG |
| Clonality: | Polyclonal |
| Immunogen: | The immunogen for anti-PSMD6 antibody: synthetic peptide directed towards the N terminal of human PSMD6. Synthetic peptide located within the following region: PLENLEEGLPKNPDLRIAQLRFLSLPEHRGDAAVRDELMAAVRDNNMA |
| Formulation: | Liquid. Purified antibody supplied in 1x PBS buffer with 0.09% (w/v) sodium azide and 2% sucrose. <i>Note that this product is shipped as lyophilized powder to China customers.</i> |
| Conjugation: | Unconjugated |
| Storage: | Store at -20°C as received. |
| Stability: | Stable for 12 months from date of receipt. |
| Predicted Protein Size: | 45 kDa |
| Gene Name: | proteasome 26S subunit, non-ATPase 6 |
| Database Link: | NP_055629 Entrez Gene 9861 Human Q15008 |
| Background: | PSMD6 acts as a regulatory subunit of the 26S proteasome which is involved in the ATP-dependent degradation of ubiquitinated proteins. |
| Synonyms: | p42A; p44S10; Rpn7; S10; SGA-113M |
| Note: | Immunogen sequence homology: Dog: 100%; Pig: 100%; Rat: 100%; Human: 100%; Mouse: 100%; Bovine: 100%; Rabbit: 100%; Guinea pig: 100%; Zebrafish: 93% |
| Protein Pathways: | Proteasome |



[View online »](#)

Product images:

WB Suggested Anti-PSMD6 Antibody Titration:
0.2-1 ug/ml; Positive Control: Human brain