

Product datasheet for **TA330283**

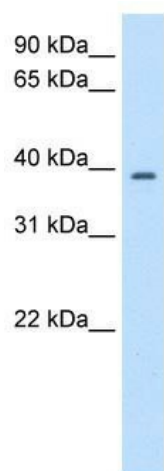
PSMD6 Rabbit Polyclonal Antibody

Product data:

Product Type:	Primary Antibodies
Applications:	WB
Recommended Dilution:	WB
Reactivity:	Human
Host:	Rabbit
Isotype:	IgG
Clonality:	Polyclonal
Immunogen:	The immunogen for anti-PSMD6 antibody: synthetic peptide directed towards the N terminal of human PSMD6. Synthetic peptide located within the following region: YEALCKSLDWQIDVDLLNKMKKANEDLKRLEDELEDAEKNLGESEIRDA
Formulation:	Liquid. Purified antibody supplied in 1x PBS buffer with 0.09% (w/v) sodium azide and 2% sucrose. <i>Note that this product is shipped as lyophilized powder to China customers.</i>
Conjugation:	Unconjugated
Storage:	Store at -20°C as received.
Stability:	Stable for 12 months from date of receipt.
Predicted Protein Size:	45 kDa
Gene Name:	proteasome 26S subunit, non-ATPase 6
Database Link:	NP_055629 Entrez Gene 9861 Human Q15008
Background:	PSMD6 acts as a regulatory subunit of the 26S proteasome which is involved in the ATP-dependent degradation of ubiquitinated proteins.
Synonyms:	p42A; p44S10; Rpn7; S10; SGA-113M
Note:	Immunogen sequence homology: Dog: 100%; Pig: 100%; Rat: 100%; Horse: 100%; Human: 100%; Mouse: 100%; Bovine: 100%; Guinea pig: 100%; Rabbit: 93%; Zebrafish: 86%
Protein Pathways:	Proteasome



[View online »](#)

Product images:

WB Suggested Anti-PSMD6 Antibody Titration:
2.5ug/ml; Positive Control: Transfected 293T