

Product datasheet for **TA330281**

PAX7 Rabbit Polyclonal Antibody

Product data:

Product Type:	Primary Antibodies
Applications:	IHC, WB
Recommended Dilution:	WB, IHC
Reactivity:	Human, Mouse
Host:	Rabbit
Isotype:	IgG
Clonality:	Polyclonal
Immunogen:	The immunogen for anti-PAX7 antibody: synthetic peptide directed towards the N terminal of human PAX7. Synthetic peptide located within the following region: KEEEDADKKEDDGEKKAKHSIDGILGDKGNRLDEGSDVESEPDLPKRK
Formulation:	Liquid. Purified antibody supplied in 1x PBS buffer with 0.09% (w/v) sodium azide and 2% sucrose. <i>Note that this product is shipped as lyophilized powder to China customers.</i>
Conjugation:	Unconjugated
Storage:	Store at -20°C as received.
Stability:	Stable for 12 months from date of receipt.
Predicted Protein Size:	57 kDa
Gene Name:	paired box 7
Database Link:	NP_002575 Entrez Gene 18509 Mouse Entrez Gene 5081 Human P23759
Background:	PAX7 is a member of the paired box (PAX) family of transcription factors. Members of this gene family typically contain a paired box domain, an octapeptide, and a paired-type homeodomain. These genes play critical roles during fetal development and cancer growth. The specific function of the paired box gene 7 is unknown but speculated to involve tumor suppression since fusion of this gene with a forkhead domain family member has been associated with alveolar rhabdomyosarcoma. Alternative splicing in this gene has produced two known products but the biological significance of the variants is unknown.

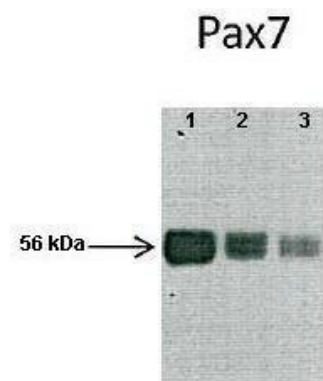


[View online »](#)

Synonyms: HUP1; PAX7B; RMS2

Note: Immunogen sequence homology: Dog: 100%; Pig: 100%; Rat: 100%; Human: 100%; Mouse: 100%; Bovine: 100%; Rabbit: 100%; Guinea pig: 100%; Zebrafish: 93%

Protein Families: Adult stem cells, Druggable Genome, Embryonic stem cells, ES Cell Differentiation/IPS, Transcription Factors

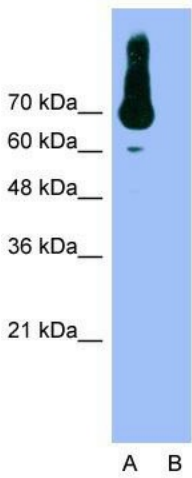
Product images:


Lanes:1: Mouse skeletal muscle lysate, 2: Mouse skeletal muscle lysate, 3: Mouse skeletal muscle lysate; Primary Antibody Dilution:1:1000; Secondary Antibody:Anti-rabbit HRP; Secondary Antibody Dilution:1:10000; Gene Name:PAX7; Submitted by:Anonymous;

[See Immunoblot 2 Data and customer Feedback for more Information](#)



WB Suggested Anti-PAX7 Antibody Titration: 0.05ug/ml; Positive Control: Jurkat cell lysate



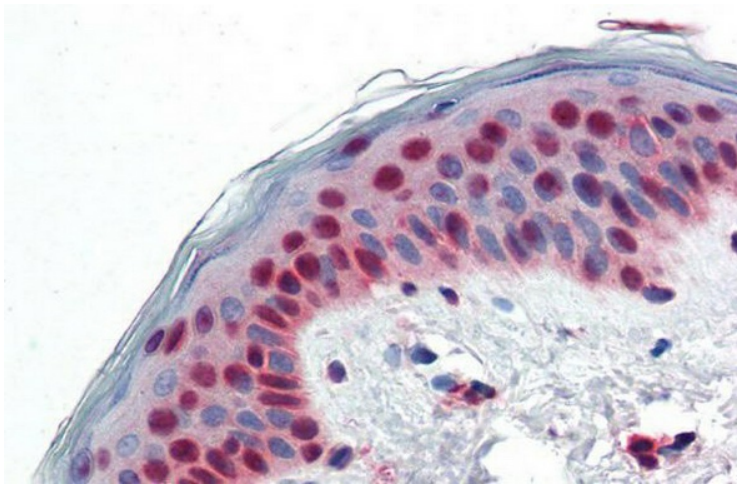
Anti-PAX7 Western Blot & Peptide Block Validation

Lot Number: QC1867
Lysate: Jurkat Cell

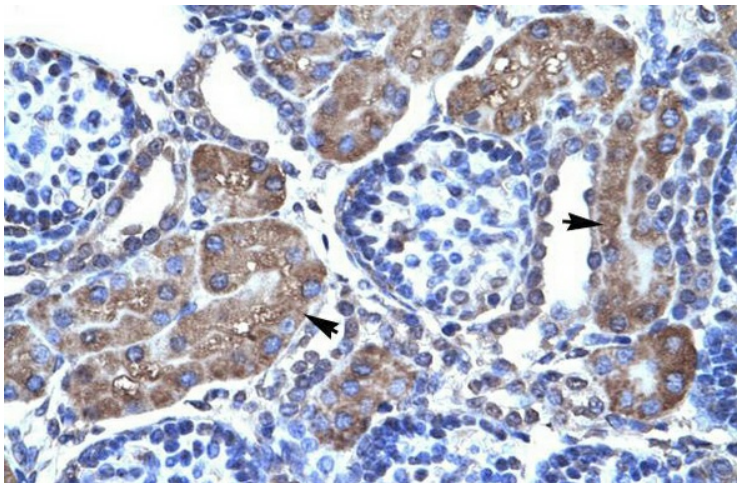
Lane A: Primary Antibody
Lane B: Primary Antibody + Blocking Peptide

Primary Antibody Concentration: 0.0625µg/ml
Peptide Concentration: 8.0µg/ml
Lysate Quantity: 25µg/lane
Gel Concentration: 12%

Host: Rabbit; Target Name: PAX7; Sample Tissue: Jurkat; Lane A: Primary Antibody; Lane B: Primary Antibody + Blocking Peptide ; Primary Antibody Concentration:0.0625ug/mL; Peptide Concentration: 8.0ug/mL; Lysate Quantity: 25ug/lane; Gel Concentration: 12%



Immunohistochemistry with Human Skin lysate tissue at an antibody concentration of 5.0ug/ml using anti-PAX7 antibody



Rabbit Anti-PAX7 Antibody; Paraffin Embedded Tissue: Human Kidney; Cellular Data: Epithelial cells of renal tubule; Antibody Concentration: 4.0-8.0 ug/ml; Magnification: 400X