

## Product datasheet for **TA330279**

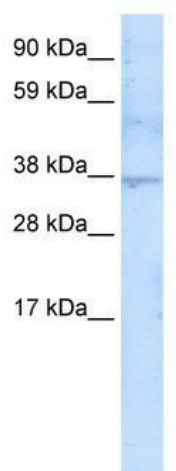
### SIRT3 Rabbit Polyclonal Antibody

#### Product data:

Product Type:	Primary Antibodies
Applications:	WB
Recommended Dilution:	WB
Reactivity:	Human
Host:	Rabbit
Isotype:	IgG
Clonality:	Polyclonal
Immunogen:	The immunogen for anti-SIRT3 antibody: synthetic peptide directed towards the C terminal of human SIRT3. Synthetic peptide located within the following region: VGPLAWHPRSRDVAQLGDVHGVESLVELLGWTEEMRDLVQRETGKLDGP
Formulation:	Liquid. Purified antibody supplied in 1x PBS buffer with 0.09% (w/v) sodium azide and 2% sucrose. <i>Note that this product is shipped as lyophilized powder to China customers.</i>
Conjugation:	Unconjugated
Storage:	Store at -20°C as received.
Stability:	Stable for 12 months from date of receipt.
Predicted Protein Size:	44 kDa
Gene Name:	sirtuin 3
Database Link:	<a href="#">NP_036371</a> <a href="#">Entrez Gene 23410 Human</a> <a href="#">Q9NTG7</a>
Background:	SIRT3 is included in class I of the sirtuin family which is characterized by a sirtuin core domain. Human sirtuins may function as intracellular regulatory proteins with mono-ADP-ribosyltransferase activity.
Synonyms:	SIR2L3
Note:	Immunogen sequence homology: Human: 100%; Bovine: 100%; Rabbit: 100%; Horse: 86%; Mouse: 86%; Dog: 79%; Pig: 79%; Rat: 79%; Guinea pig: 79%
Protein Families:	Druggable Genome, Transcription Factors



[View online »](#)

**Product images:**

WB Suggested Anti-SIRT3 Antibody; Titration: 5 ug/ml; Positive Control: Fetal thymus