

Product datasheet for **TA330278**

SIRT3 Rabbit Polyclonal Antibody

Product data:

| | |
|-------------------------|--|
| Product Type: | Primary Antibodies |
| Applications: | IHC, WB |
| Recommended Dilution: | WB, IHC |
| Reactivity: | Human |
| Host: | Rabbit |
| Isotype: | IgG |
| Clonality: | Polyclonal |
| Immunogen: | The immunogen for anti-SIRT3 antibody: synthetic peptide directed towards the C terminal of human SIRT3. Synthetic peptide located within the following region: VGPLAWHPRSRDVAQLGDVHGVESLVELLGWTEEMRDLVQRETGKLDGP |
| Formulation: | Liquid. Purified antibody supplied in 1x PBS buffer with 0.09% (w/v) sodium azide and 2% sucrose. <i>Note that this product is shipped as lyophilized powder to China customers.</i> |
| Conjugation: | Unconjugated |
| Storage: | Store at -20°C as received. |
| Stability: | Stable for 12 months from date of receipt. |
| Predicted Protein Size: | 28 kDa |
| Gene Name: | sirtuin 3 |
| Database Link: | NP_001017524 Entrez Gene 23410 Human Q9NTG7 |
| Background: | The SIRT3 gene encodes a member of the sirtuin family of proteins, homologs to the yeast Sir2 protein. The functions of human sirtuins have not yet been determined; however, yeast sirtuin proteins are known to regulate epigenetic gene silencing and suppress recombination of rDNA. Studies suggest that the human sirtuins may function as intracellular regulatory proteins with mono-ADP-ribosyltransferase activity. SIRT3 encodes a protein that is included in class I of the sirtuin family. |
| Synonyms: | SIR2L3 |

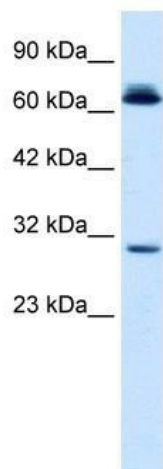


[View online »](#)

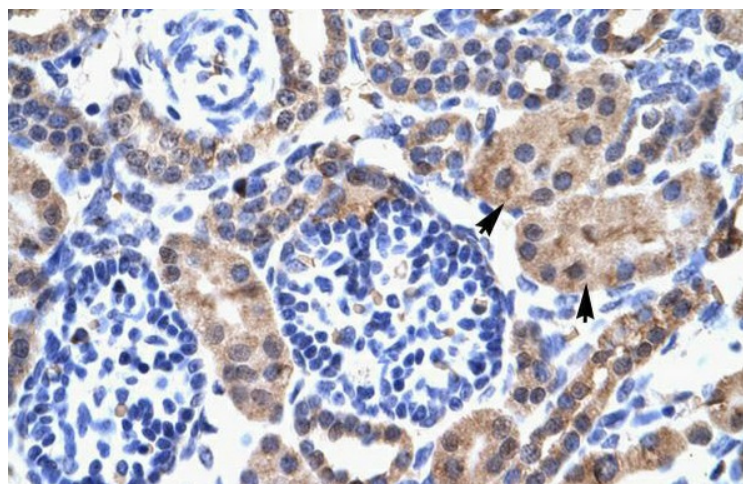
Note: Immunogen sequence homology: Human: 100%; Bovine: 100%; Rabbit: 100%; Horse: 86%; Mouse: 86%; Dog: 79%; Pig: 79%; Rat: 79%; Guinea pig: 79%

Protein Families: Druggable Genome, Transcription Factors

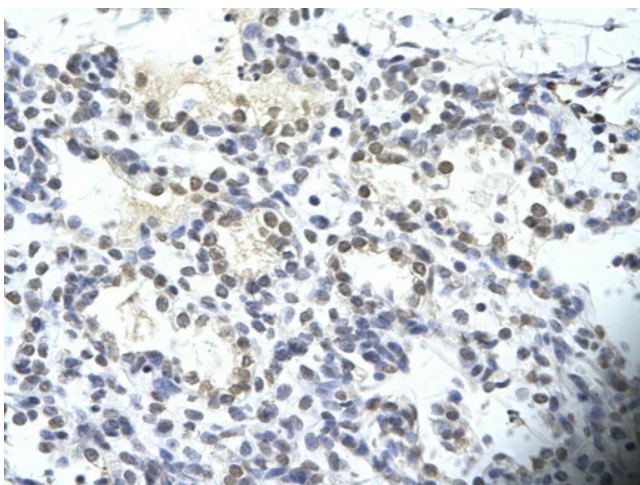
Product images:



WB Suggested Anti-SIRT3 Antibody Titration: 0.2-1 ug/ml; ELISA Titer: 1:1562500; Positive Control: Human Thymus



Human kidney



Rabbit Anti-SIRT3 Antibody; Paraffin Embedded
Tissue: Human alveolar cell; Cellular Data:
Epithelial cells of renal tubule; Antibody
Concentration: 4.0-8.0 ug/ml; Magnification: 400X