

Product datasheet for **TA330277**

SIRT3 Rabbit Polyclonal Antibody

Product data:

Product Type:	Primary Antibodies
Applications:	WB
Recommended Dilution:	WB
Reactivity:	Human
Host:	Rabbit
Isotype:	IgG
Clonality:	Polyclonal
Immunogen:	The immunogen for anti-SIRT3 antibody: synthetic peptide directed towards the middle region of human SIRT3. Synthetic peptide located within the following region: SGIPDFRSPGSLYSNLQYDLPYPEAIFELPFFFHNPKPFFTLAKELYP
Formulation:	Liquid. Purified antibody supplied in 1x PBS buffer with 0.09% (w/v) sodium azide and 2% sucrose. <i>Note that this product is shipped as lyophilized powder to China customers.</i>
Conjugation:	Unconjugated
Storage:	Store at -20°C as received.
Stability:	Stable for 12 months from date of receipt.
Predicted Protein Size:	44 kDa
Gene Name:	sirtuin 3
Database Link:	NP_036371 Entrez Gene 23410 Human Q9NTG7
Background:	SIRT3 is a member of the sirtuin family of proteins, homologs to the yeast Sir2 protein. Members of the sirtuin family are characterized by a sirtuin core domain and grouped into four classes. The functions of human sirtuins have not yet been determined; however, yeast sirtuin proteins are known to regulate epigenetic gene silencing and suppress recombination of rDNA. Studies suggest that the human sirtuins may function as intracellular regulatory proteins with mono-ADP-ribosyltransferase activity. The protein encoded by this gene is included in class I of the sirtuin family.



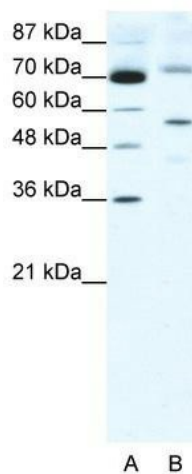
[View online »](#)

Synonyms: SIR2L3

Note: Immunogen sequence homology: Dog: 100%; Rat: 100%; Horse: 100%; Human: 100%; Mouse: 100%; Rabbit: 92%; Zebrafish: 85%; Pig: 83%; Guinea pig: 83%; Yeast: 77%

Protein Families: Druggable Genome, Transcription Factors

Product images:



WB Suggested Anti-SIRT3 Antibody Titration:
2.5ug/ml; ELISA Titer: 1:312500; Positive Control:
HepG2 cell lysate