

Product datasheet for **TA330276**

Homeobox protein SIX6 (SIX6) Rabbit Polyclonal Antibody

Product data:

Product Type:	Primary Antibodies
Applications:	IHC, WB
Recommended Dilution:	WB, IHC
Reactivity:	Human
Host:	Rabbit
Isotype:	IgG
Clonality:	Polyclonal
Immunogen:	The immunogen for anti-SIX6 antibody: synthetic peptide directed towards the N terminal of human SIX6. Synthetic peptide located within the following region: PAACEALNKNESVLRARAIVAFHGGNYRELYHILENHKFTKESHAKLQAL
Formulation:	Liquid. Purified antibody supplied in 1x PBS buffer with 0.09% (w/v) sodium azide and 2% sucrose.
Conjugation:	Unconjugated
Storage:	Store at -20°C as received.
Stability:	Stable for 12 months from date of receipt.
Predicted Protein Size:	28 kDa
Gene Name:	SIX homeobox 6
Database Link:	NP_031400 Entrez Gene 4990 Human O95475
Background:	SIX6 is a member of SIX family. It is the homologue of the chick Six6(Optx2) gene. SIX6 is closely related to SIX3 and is expressed in the developing and adult human retina.
Synonyms:	MCOPCT2; ODRMD; OPTX2; Six9
Note:	Immunogen sequence homology: Dog: 100%; Pig: 100%; Rat: 100%; Horse: 100%; Human: 100%; Mouse: 100%; Sheep: 100%; Bovine: 100%; Rabbit: 100%; Guinea pig: 100%; Zebrafish: 86%

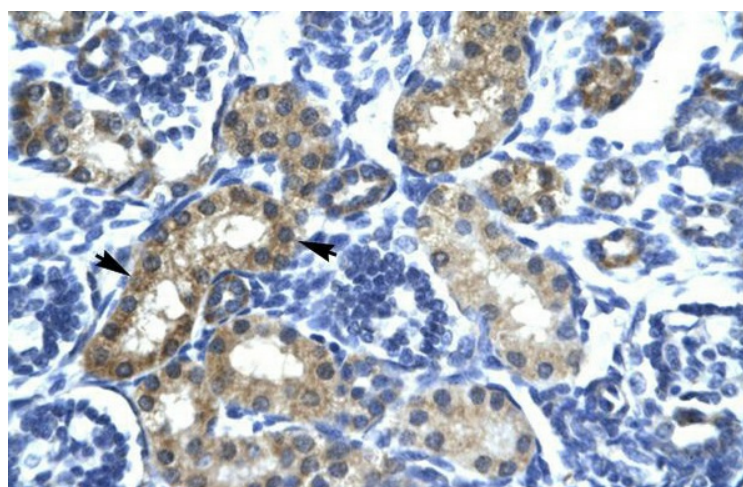


[View online »](#)

Product images:



WB Suggested Anti-SIX6 Antibody Titration: 0.2-1 ug/ml; Positive Control: Jurkat cell lysate



Human kidney