

## Product datasheet for **TA330273**

### RUVBL2 Rabbit Polyclonal Antibody

#### Product data:

Product Type:	Primary Antibodies
Applications:	IHC, WB
Recommended Dilution:	WB, IHC
Reactivity:	Human
Host:	Rabbit
Isotype:	IgG
Clonality:	Polyclonal
Immunogen:	The immunogen for anti-RUVBL2 antibody: synthetic peptide directed towards the N terminal of human RUVBL2. Synthetic peptide located within the following region: IERIGAHSHIRGLGLDDALEPRQASQGMVGQLAARRAAGVVLEMIREGKI
Formulation:	Liquid. Purified antibody supplied in 1x PBS buffer with 0.09% (w/v) sodium azide and 2% sucrose. <i>Note that this product is shipped as lyophilized powder to China customers.</i>
Conjugation:	Unconjugated
Storage:	Store at -20°C as received.
Stability:	Stable for 12 months from date of receipt.
Predicted Protein Size:	51 kDa
Gene Name:	RuvB like AAA ATPase 2
Database Link:	<a href="#">NP_006657</a> <a href="#">Entrez Gene 10856 Human</a> <a href="#">Q9Y230</a>
Background:	RuvB-Like 2 (48-kDa TATA box-binding protein-interacting protein, Reptin 52, RUVBL2) is the second human homologue of the bacterial RuvB gene. Bacterial RuvB protein is a DNA helicase essential for homologous recombination and DNA double-strand break repair. Functional analysis showed that this protein has both ATPase and DNA helicase activities. This gene is physically linked to the CGB/LHB gene cluster on chromosome 19q13.3, and is very close (55 nt) to the LHB gene, in the opposite orientation.
Synonyms:	CGI-46; ECP51; INO80J; REPTIN; RVB2; TIH2; TIP48; TIP49B

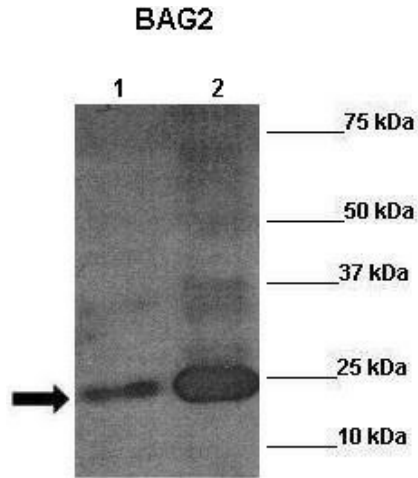


[View online »](#)

**Note:** Immunogen sequence homology: Dog: 100%; Pig: 100%; Rat: 100%; Horse: 100%; Human: 100%; Mouse: 100%; Bovine: 100%; Rabbit: 100%; Guinea pig: 100%; Zebrafish: 93%; Yeast: 79%

**Protein Families:** Transcription Factors

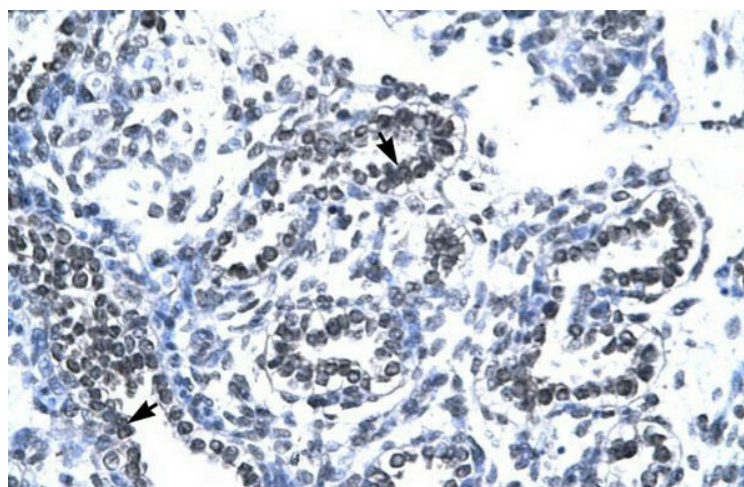
**Product images:**



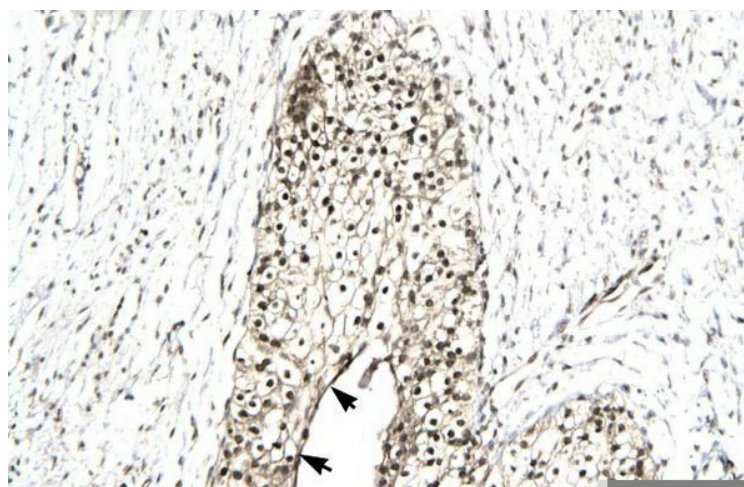
WB Suggested Anti-RUVBL2 Antibody ; Positive Control: siRUVBL2 transfected H1299 cells



WB Suggested Anti-RUVBL2 Antibody Titration: 2.0-4.0ug/ml; Positive Control: Daudi cell lysate RUVBL2 is supported by BioGPS gene expression data to be expressed in Daudi



Human Lung



Human urinary bladder