

## Product datasheet for **TA330271**

### SIX3 Rabbit Polyclonal Antibody

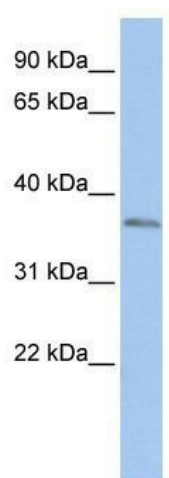
#### Product data:

Product Type:	Primary Antibodies
Applications:	WB
Recommended Dilution:	WB
Reactivity:	Human
Host:	Rabbit
Isotype:	IgG
Clonality:	Polyclonal
Immunogen:	The immunogen for anti-SIX3 antibody: synthetic peptide directed towards the N terminal of human SIX3. Synthetic peptide located within the following region: VFRSPLDLYSSHLLPNFADSHHRSILLASSGGGNGAGGGGGAGGGSGGG
Formulation:	Liquid. Purified antibody supplied in 1x PBS buffer with 0.09% (w/v) sodium azide and 2% sucrose. <i>Note that this product is shipped as lyophilized powder to China customers.</i>
Conjugation:	Unconjugated
Storage:	Store at -20°C as received.
Stability:	Stable for 12 months from date of receipt.
Predicted Protein Size:	35 kDa
Gene Name:	SIX homeobox 3
Database Link:	<a href="#">NP_005404</a> <a href="#">Entrez Gene 6496 Human</a> <a href="#">O95343</a>
Background:	SIX3 belongs to the SIX/Sine oculis homeobox family. It contains 1 homeobox DNA-binding domain. SIX3 may be involved in visual system development.
Synonyms:	HPE2
Note:	Immunogen sequence homology: Human: 100%; Bovine: 93%; Dog: 86%; Rat: 86%; Mouse: 86%
Protein Families:	Druggable Genome



[View online »](#)

## Product images:



WB Suggested Anti-SIX3 Antibody Titration: 0.2-1 ug/ml; ELISA Titer: 1:62500; Positive Control: HepG2 cell lysate