

Product datasheet for **TA330270**

ATOH1 Rabbit Polyclonal Antibody

Product data:

Product Type:	Primary Antibodies
Applications:	IHC, WB
Recommended Dilution:	WB, IHC
Reactivity:	Human, Mouse
Host:	Rabbit
Isotype:	IgG
Clonality:	Polyclonal
Immunogen:	The immunogen for anti-ATOH1 antibody: synthetic peptide directed towards the middle region of human ATOH1. Synthetic peptide located within the following region: QLDALHFSTFEDSALTAMMAQKNLSPSLPGSILQPVQEENSKTSPRSHRS
Formulation:	Liquid. Purified antibody supplied in 1x PBS buffer with 0.09% (w/v) sodium azide and 2% sucrose. <i>Note that this product is shipped as lyophilized powder to China customers.</i>
Purification:	Affinity Purified
Conjugation:	Unconjugated
Storage:	Store at -20°C as received.
Stability:	Stable for 12 months from date of receipt.
Predicted Protein Size:	38 kDa
Gene Name:	atonal bHLH transcription factor 1
Database Link:	NP_005163 Entrez Gene 11921 Mouse Entrez Gene 474 Human Q92858
Background:	ATOH1 belongs to the basic helix-loop-helix (BHLH) family of transcription factors. It activates E-box dependent transcription along with E47. This protein belongs to the basic helix-loop-helix (BHLH) family of transcription factors. It activates E-box dependent transcription along with E47. Publication Note: This RefSeq record includes a subset of the publications that are available for this gene. Please see the Entrez Gene record to access additional publications.
Synonyms:	ATH1; bHLHa14; HATH1; MATH-1

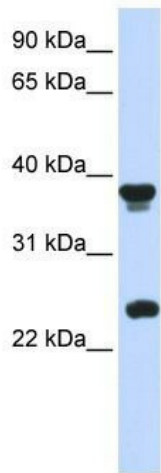


[View online »](#)

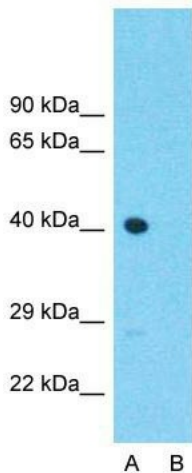
Note: Immunogen sequence homology: Human: 100%; Pig: 92%; Mouse: 92%; Bovine: 92%; Dog: 85%; Horse: 85%; Rabbit: 83%; Rat: 77%

Protein Families: Druggable Genome, Transcription Factors

Product images:



WB Suggested Anti-ATOH1 Antibody Titration: 0.2-1 ug/ml; ELISA Titer: 1:62500; Positive Control: Human Placenta



Anti-ATOH1 Western Blot & Peptide Block Validation

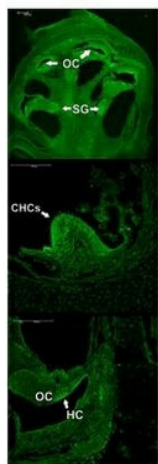
Lot Number: QC1821

Lysate: Placenta

Lane A: Primary Antibody
Lane B: Primary Antibody + Blocking Peptide

Primary Antibody Concentration: 1.0µg/ml
Peptide Concentration: 5.0µg/ml
Lysate Quantity: 25µg/lane
Gel Concentration: 12%

Host: Rabbit; Target Name: ATOH1; Sample Tissue: Placenta; Lane A: Primary Antibody; Lane B: Primary Antibody + Blocking Peptide ; Primary Antibody Concentration:1ug/ml; Peptide Concentration: 5ug/ml; Lysate Quantity: 25ug/lane; Gel Concentration: 0.12%



mouse cochlea