

Product datasheet for **TA330267**

TLE3 Rabbit Polyclonal Antibody

Product data:

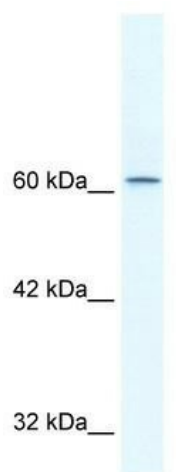
Product Type:	Primary Antibodies
Applications:	WB
Recommended Dilution:	WB
Reactivity:	Human
Host:	Rabbit
Isotype:	IgG
Clonality:	Polyclonal
Immunogen:	The immunogen for anti-TLE3 antibody: synthetic peptide directed towards the N terminal of human TLE3. Synthetic peptide located within the following region: GSSSGLLALGALGSQAHLTVKDEKNHHELDHRERESSANNSVSPSESLRA
Formulation:	Liquid. Purified antibody supplied in 1x PBS buffer with 0.09% (w/v) sodium azide and 2% sucrose. <i>Note that this product is shipped as lyophilized powder to China customers.</i>
Conjugation:	Unconjugated
Storage:	Store at -20°C as received.
Stability:	Stable for 12 months from date of receipt.
Predicted Protein Size:	83 kDa
Gene Name:	transducin like enhancer of split 3
Database Link:	NP_005069 Entrez Gene 7090 Human Q04726
Background:	The TLE genes are differentially expressed and encode nuclear proteins, consistent with the presence of sequence motifs associated with nuclear functions. These genes are the human homologues of <i>Drosophila groucho</i> , a member of the Notch signaling pathway which controls a number of different cell-fate choices in invertebrates and vertebrates.
Synonyms:	ESG; ESG3; GRG3; HsT18976
Note:	Immunogen sequence homology: Dog: 100%; Pig: 100%; Human: 100%; Bovine: 100%; Rat: 93%; Horse: 93%; Mouse: 93%; Rabbit: 93%; Guinea pig: 93%; Zebrafish: 79%



[View online »](#)

Protein Families: Transcription Factors

Product images:



WB Suggested Anti-TLE3 Antibody Titration:
2.5ug/ml; Positive Control: HepG2 cell lysate