

## Product datasheet for **TA330265**

### ASCL1 Rabbit Polyclonal Antibody

#### Product data:

Product Type:	Primary Antibodies
Applications:	IHC, WB
Recommended Dilution:	WB, IHC
Reactivity:	Human
Host:	Rabbit
Isotype:	IgG
Clonality:	Polyclonal
Immunogen:	The immunogen for anti-ASCL1 antibody: synthetic peptide directed towards the N terminal of human ASCL1. Synthetic peptide located within the following region: QSAQQQQQQQQQQQAPQLRPAADGGQPSGGGHKSAPKQVKRQRSSPELM
Formulation:	Liquid. Purified antibody supplied in 1x PBS buffer with 0.09% (w/v) sodium azide and 2% sucrose. <i>Note that this product is shipped as lyophilized powder to China customers.</i>
Conjugation:	Unconjugated
Storage:	Store at -20°C as received.
Stability:	Stable for 12 months from date of receipt.
Predicted Protein Size:	25 kDa
Gene Name:	achaete-scute family bHLH transcription factor 1
Database Link:	<a href="#">NP_004307</a> <a href="#">Entrez Gene 429 Human</a> <a href="#">P50553</a>
Background:	ASCL1 encodes a member of the basic helix-loop-helix (BHLH) family of transcription factors. The protein activates transcription by binding to the E box (5'-CANNTG-3'). Dimerization with other BHLH proteins is required for efficient DNA binding. This protein plays a role in the neuronal commitment and differentiation and in the generation of olfactory and autonomic neurons. It is highly expressed in medullary thyroid cancer and small cell lung cancer and may be a useful marker for these cancers.
Synonyms:	ASH1; bHLHa46; HASH1; MASH1

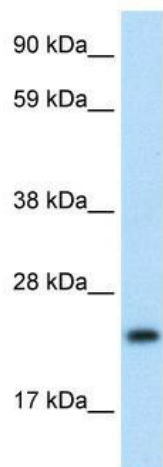


[View online »](#)

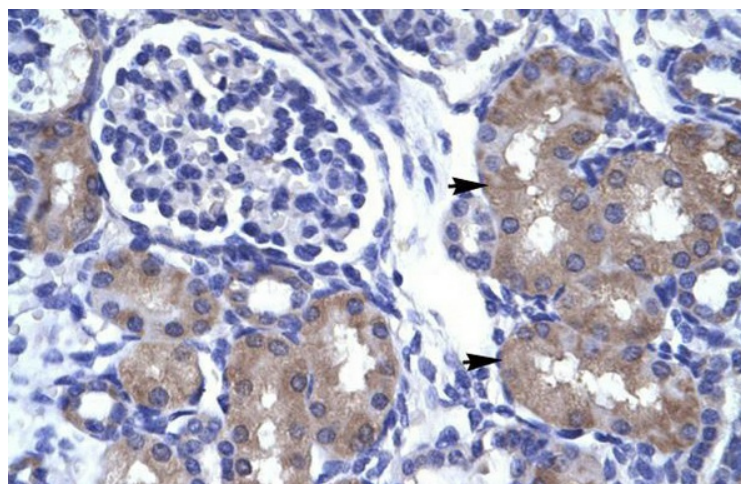
**Note:** Immunogen sequence homology: Pig: 100%; Human: 100%; Bovine: 100%; Guinea pig: 100%; Dog: 92%; Rat: 92%; Mouse: 92%; Rabbit: 92%

**Protein Families:** Druggable Genome, Transcription Factors

**Product images:**



WB Suggested Anti-ASCL1 Antibody Titration:  
1.25ug/ml; Positive Control: Human Thymus



Human kidney