

Product datasheet for **TA330264**

TIP49A (RUVBL1) Rabbit Polyclonal Antibody

Product data:

Product Type:	Primary Antibodies
Applications:	WB
Recommended Dilution:	WB
Reactivity:	Human
Host:	Rabbit
Isotype:	IgG
Clonality:	Polyclonal
Immunogen:	The immunogen for anti-RUVBL1 antibody: synthetic peptide directed towards the N terminal of human RUVBL1. Synthetic peptide located within the following region: KIEEVKSTTKTQRIASHSHVKGLGLDESLAKQAASGLVGQENAREACGV
Formulation:	Liquid. Purified antibody supplied in 1x PBS buffer with 0.09% (w/v) sodium azide and 2% sucrose. <i>Note that this product is shipped as lyophilized powder to China customers.</i>
Conjugation:	Unconjugated
Storage:	Store at -20°C as received.
Stability:	Stable for 12 months from date of receipt.
Predicted Protein Size:	50 kDa
Gene Name:	RuvB like AAA ATPase 1
Database Link:	NP_003698 Entrez Gene 8607 Human Q9Y265
Background:	RUVBL1 possesses single-stranded DNA-stimulated ATPase and ATP-dependent DNA helicase (3' to 5') activity. It is the component of the NuA4 histone acetyltransferase complex which is involved in transcriptional activation of select genes principally by acetylation of nucleosomal histone H4 and H2A. The NuA4 complex ATPase and helicase activities seem to be, at least in part, contributed by the association of RUVBL1 and RUVBL2 with EP400. NuA4 may also play a direct role in DNA repair when recruited to sites of DNA damage. RUVBL1 plays an essential role in oncogenic transformation by MYC and also modulates transcriptional activation by the LEF1/TCF1-CTNNB1 complex.



[View online »](#)

Synonyms: ECP54; INO80H; NMP238; PONTIN; Pontin52; RVB1; TIH1; TIP49; TIP49A

Note: Immunogen sequence homology: Dog: 100%; Pig: 100%; Rat: 100%; Horse: 100%; Human: 100%; Mouse: 100%; Bovine: 100%; Rabbit: 100%; Zebrafish: 100%; Guinea pig: 100%; Goat: 77%

Protein Families: Stem cell - Pluripotency, Transcription Factors

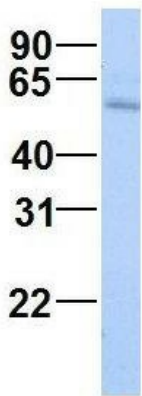
Protein Pathways: Wnt signaling pathway

Product images:



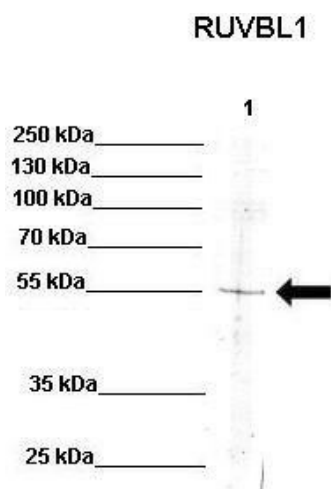
WB Suggested Anti-RUVBL1 Antibody Titration: 0.2-1 ug/ml; Positive Control: Human heart

RUVBL1



Rabbit Anti-RUVBL1
Sample Type: Human Fetal Lung
Antibody Concentration: 1ug/mL

Host: Rabbit; Target Name: RUVBL1; Sample Tissue: Human Fetal Lung; Antibody Dilution: 1.0ug/ml



WB Suggested Anti-RUVBL1 Antibody ; Positive Control: Lane 1: 30ug K562 lysate; Primary Antibody Dilution : 1:200; Secondary Antibody : Anti-rabbit-HRP; Secondary Antibody Dilution : 1:1000; Submitted by: Sustackova Gabriela