

## Product datasheet for **TA330263**

### TLE2 Rabbit Polyclonal Antibody

#### Product data:

Product Type:	Primary Antibodies
Applications:	WB
Recommended Dilution:	WB
Reactivity:	Human
Host:	Rabbit
Isotype:	IgG
Clonality:	Polyclonal
Immunogen:	The immunogen for anti-TLE2 antibody: synthetic peptide directed towards the N terminal of human TLE2. Synthetic peptide located within the following region: VEEERPSGPGGGGKQRADEKEPSGPGPYESDEDKSDYNLVDDEDQPSEPPSP
Formulation:	Liquid. Purified antibody supplied in 1x PBS buffer with 0.09% (w/v) sodium azide and 2% sucrose. <i>Note that this product is shipped as lyophilized powder to China customers.</i>
Conjugation:	Unconjugated
Storage:	Store at -20°C as received.
Stability:	Stable for 12 months from date of receipt.
Predicted Protein Size:	80 kDa
Gene Name:	transducin like enhancer of split 2
Database Link:	<a href="#">NP_003251</a> <a href="#">Entrez Gene 7089 Human</a> <a href="#">Q04725</a>
Background:	TLE2 belongs to the WD repeat Groucho/TLE family. It contains 6 WD repeats. TLE2 is a transcriptional corepressor that binds to a number of transcription factors. It inhibits the transcriptional activation mediated by CTNNB1 and TCF family members in Wnt signaling. The effects of full-length TLE family members may be modulated by association with dominant-negative AES.
Synonyms:	ESG; ESG2; GRG2

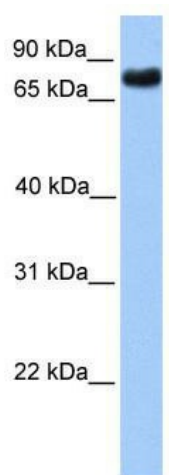


[View online »](#)

**Note:** Immunogen sequence homology: Dog: 100%; Pig: 100%; Rat: 100%; Horse: 100%; Human: 100%; Bovine: 100%; Guinea pig: 92%; Mouse: 85%

**Protein Families:** Transcription Factors

**Product images:**



WB Suggested Anti-TLE2 Antibody Titration: 0.2-1 ug/ml; Positive Control: Transfected 293T