

Product datasheet for **TA330260**

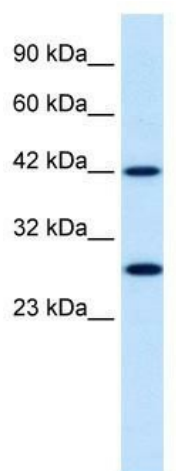
PSMD4 Rabbit Polyclonal Antibody

Product data:

Product Type:	Primary Antibodies
Applications:	WB
Recommended Dilution:	WB
Reactivity:	Human
Host:	Rabbit
Isotype:	IgG
Clonality:	Polyclonal
Immunogen:	The immunogen for anti-PSMD4 antibody: synthetic peptide directed towards the N terminal of human PSMD4. Synthetic peptide located within the following region: VAHLALKHRQGKNHKMRIAIFVGSPVEDNEKDLVKLAKRLKKEKVNVDII
Formulation:	Liquid. Purified antibody supplied in 1x PBS buffer with 0.09% (w/v) sodium azide and 2% sucrose. <i>Note that this product is shipped as lyophilized powder to China customers.</i>
Conjugation:	Unconjugated
Storage:	Store at -20°C as received.
Stability:	Stable for 12 months from date of receipt.
Predicted Protein Size:	41 kDa
Gene Name:	proteasome 26S subunit, non-ATPase 4
Database Link:	NP_002801 Entrez Gene 5710 Human P55036
Background:	PSMD4 encodes one of the non-ATPase subunits of the 19S regulator lid which is part of a multicatalytic proteinase complex of the 26S proteasome.
Synonyms:	AF; AF-1; ASF; MCB1; pUB-R5; Rpn10; S5A
Note:	Immunogen sequence homology: Dog: 100%; Pig: 100%; Rat: 100%; Horse: 100%; Human: 100%; Mouse: 100%; Sheep: 100%; Bovine: 100%; Rabbit: 100%; Guinea pig: 100%; Zebrafish: 93%; Yeast: 79%
Protein Pathways:	Proteasome



[View online »](#)

Product images:

WB Suggested Anti-PSMD4 Antibody Titration: 0.3ug/ml; Positive Control: Raji cell lysate PSMD4 is strongly supported by BioGPS gene expression data to be expressed in Human Raji cells