

Product datasheet for **TA330259**

PSMD4 Rabbit Polyclonal Antibody

Product data:

Product Type:	Primary Antibodies
Applications:	IHC, WB
Recommended Dilution:	WB, IHC
Reactivity:	Human
Host:	Rabbit
Isotype:	IgG
Clonality:	Polyclonal
Immunogen:	The immunogen for anti-PSMD4 antibody: synthetic peptide directed towards the C terminal of human PSMD4. Synthetic peptide located within the following region: VMQDPEFLQSVLENLPGVDPNNEAIRNAMGSLASQATKDGKKDKKEEDKK
Formulation:	Liquid. Purified antibody supplied in 1x PBS buffer with 0.09% (w/v) sodium azide and 2% sucrose. <i>Note that this product is shipped as lyophilized powder to China customers.</i>
Purification:	Affinity Purified
Conjugation:	Unconjugated
Storage:	Store at -20°C as received.
Stability:	Stable for 12 months from date of receipt.
Predicted Protein Size:	41 kDa
Gene Name:	proteasome 26S subunit, non-ATPase 4
Database Link:	NP_002801 Entrez Gene 5710 Human P55036



[View online »](#)

Background:

The 26S proteasome is a multicatalytic proteinase complex with a highly ordered structure composed of 2 complexes, a 20S core and a 19S regulator. The 20S core is composed of 4 rings of 28 non-identical subunits; 2 rings are composed of 7 alpha subunits and 2 rings are composed of 7 beta subunits. The 19S regulator is composed of a base, which contains 6 ATPase subunits and 2 non-ATPase subunits, and a lid, which contains up to 10 non-ATPase subunits. Proteasomes are distributed throughout eukaryotic cells at a high concentration and cleave peptides in an ATP/ubiquitin-dependent process in a non-lysosomal pathway. An essential function of a modified proteasome, the immunoproteasome, is the processing of class I MHC peptides. PSMD4 encodes one of the non-ATPase subunits of the 19S regulator lid.

Synonyms:

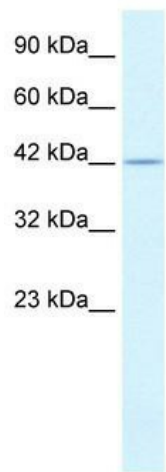
AF; AF-1; ASF; MCB1; pUB-R5; Rpn10; S5A

Note:

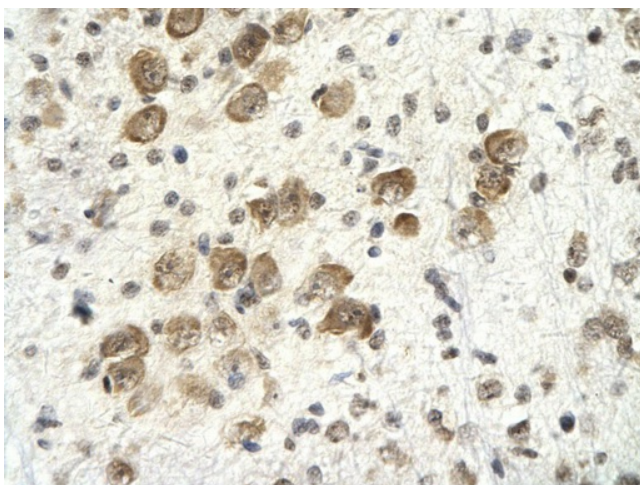
Immunogen sequence homology: Pig: 100%; Rat: 100%; Horse: 100%; Human: 100%; Sheep: 100%; Bovine: 100%; Rabbit: 100%; Dog: 93%; Mouse: 93%; Guinea pig: 93%

Protein Pathways:

Proteasome

Product images:

WB Suggested Anti-PSMD4 Antibody Titration: 0.2-1 ug/ml; Positive Control: Raji cell lysate
PSMD4 is strongly supported by BioGPS gene expression data to be expressed in Human Raji cells



Rabbit Anti-PSMD4 Antibody; Paraffin Embedded
Tissue: Human renal cell; Cellular Data:
Epithelial cells of renal tubule; Antibody
Concentration: 4.0-8.0 ug/ml; Magnification: 400X