

## Product datasheet for **TA330257**

### **PITX1 Rabbit Polyclonal Antibody**

#### **Product data:**

Product Type:	Primary Antibodies
Applications:	WB
Recommended Dilution:	WB
Reactivity:	Human, Mouse
Host:	Rabbit
Isotype:	IgG
Clonality:	Polyclonal
Immunogen:	The immunogen for anti-PITX1 antibody: synthetic peptide directed towards the N terminal of human PITX1. Synthetic peptide located within the following region: PADPREPLENSASESSDTELPEKERGGEPKGPEDSGAGGTGCGGADDDPAK
Formulation:	Liquid. Purified antibody supplied in 1x PBS buffer with 0.09% (w/v) sodium azide and 2% sucrose. <i>Note that this product is shipped as lyophilized powder to China customers.</i>
Conjugation:	Unconjugated
Storage:	Store at -20°C as received.
Stability:	Stable for 12 months from date of receipt.
Predicted Protein Size:	34 kDa
Gene Name:	paired like homeodomain 1
Database Link:	<a href="#">NP_002644</a> <a href="#">Entrez Gene 18740 Mouse</a> <a href="#">Entrez Gene 5307 Human</a> <a href="#">P78337</a>
Background:	PITX1 is a member of the RIEG/PITX homeobox family, which is involved in organ development and left-right asymmetry. This protein acts as a transcriptional regulator involved in basal and hormone-regulated activity of prolactin. This gene encodes a member of the RIEG/PITX homeobox family, which is in the bicoid class of homeodomain proteins. Members of this family are involved in organ development and left-right asymmetry. This protein acts as a transcriptional regulator involved in basal and hormone-regulated activity of prolactin. Publication Note: This RefSeq record includes a subset of the publications that are available for this gene. Please see the Entrez Gene record to access additional publications.



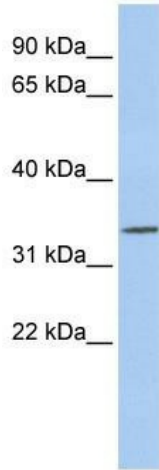
[View online »](#)

**Synonyms:** BFT; CCF; LBNBG; POTX; PTX1

**Note:** Immunogen sequence homology: Dog: 100%; Pig: 100%; Rat: 100%; Human: 100%; Mouse: 100%; Bovine: 100%; Guinea pig: 100%

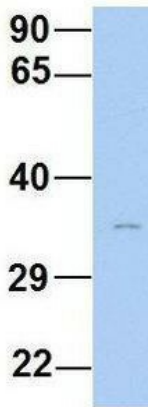
**Protein Families:** Transcription Factors

**Product images:**



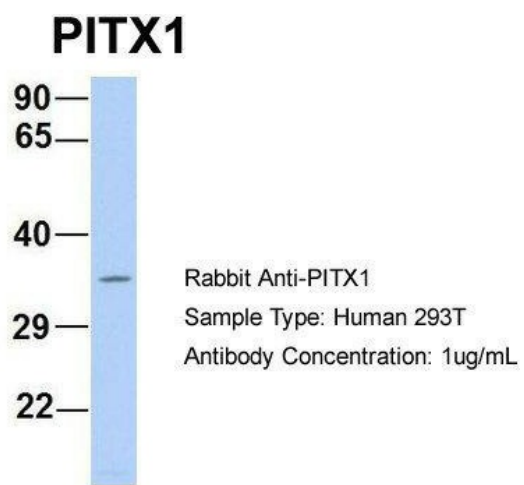
WB Suggested Anti-PITX1 Antibody Titration: 0.2-1 ug/ml; ELISA Titer: 1:62500; Positive Control: MCF7 cell lysate

**PITX1**



Rabbit Anti-PITX1  
Sample Type: Human HeLa  
Antibody Concentration: 1ug/mL

Host: Rabbit; Target Name: PITX1; Sample Tissue: Human HeLa; Antibody Dilution: 1.0ug/ml; PITX1 is strongly supported by BioGPS gene expression data to be expressed in Human HeLa cells



Host: Rabbit; Target Name: PITX1; Sample Tissue: Human 293T; Antibody Dilution: 1.0ug/ml; PITX1 is supported by BioGPS gene expression data to be expressed in HEK293T