

Product datasheet for **TA330256**

Nkx2.2 (NKX2-2) Rabbit Polyclonal Antibody

Product data:

Product Type:	Primary Antibodies
Applications:	IHC, WB
Recommended Dilution:	WB, IHC
Reactivity:	Human, Mouse
Host:	Rabbit
Isotype:	IgG
Clonality:	Polyclonal
Immunogen:	The immunogen for anti-NKX2-2 antibody: synthetic peptide directed towards the N terminal of human NKX2-2. Synthetic peptide located within the following region: MSLTNTKTGFSVKDILDLPDTNDEEGSVAEGPEEENEGPEPAKRAGPLGQ
Formulation:	Liquid. Purified antibody supplied in 1x PBS buffer with 0.09% (w/v) sodium azide and 2% sucrose. <i>Note that this product is shipped as lyophilized powder to China customers.</i>
Conjugation:	Unconjugated
Storage:	Store at -20°C as received.
Stability:	Stable for 12 months from date of receipt.
Predicted Protein Size:	30 kDa
Gene Name:	NK2 homeobox 2
Database Link:	NP_002500 Entrez Gene 18088 Mouse Entrez Gene 4821 Human O95096
Background:	Nkx2-2 contains 1 homeobox DNA-binding domain which is essential for interaction with OLIG2. Nkx2-2 may be involved in specifying diencephalic neuromeric boundaries, and in controlling the expression of genes that play a role in axonal guidance. The protein encoded by this gene contains a homeobox domain and may be involved in the morphogenesis of the central nervous system. This gene is found on chromosome 20 near NKX2-4, and these two genes appear to be duplicated on chromosome 14 in the form of TITF1 and NKX2-8. The encoded protein is likely to be a nuclear transcription factor.



[View online »](#)

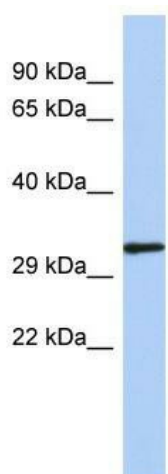
Synonyms: NKX2.2; NKX2B

Note: Immunogen sequence homology: Dog: 100%; Pig: 100%; Rat: 100%; Horse: 100%; Human: 100%; Sheep: 100%; Bovine: 100%; Guinea pig: 100%; Mouse: 92%; Rabbit: 92%

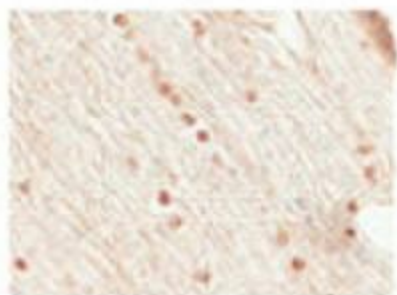
Protein Families: Transcription Factors

Protein Pathways: Maturity onset diabetes of the young

Product images:



WB Suggested Anti-NKX2-2 Antibody Titration:
0.2-1 ug/ml; ELISA Titer: 1:12500; Positive Control:
Human Spleen



IHC- PZ



IHC- P

Sample Type: Human Optic Nerve and Spinal Cord
Cellular Target: Oligodendrocyte Lineage
Cells Primary; Dilution: IHC-PZ 1:500, IHC-P 1:1000