

Product datasheet for **TA330255**

Islet 1 (ISL1) Rabbit Polyclonal Antibody

Product data:

Product Type:	Primary Antibodies
Applications:	WB
Recommended Dilution:	WB
Reactivity:	Human
Host:	Rabbit
Isotype:	IgG
Clonality:	Polyclonal
Immunogen:	The immunogen for anti-ISL1 antibody: synthetic peptide directed towards the N terminal of human ISL1. Synthetic peptide located within the following region: IECFRCVACSRQLIPGDEFALREDGLFCRADHDVVERASLGAGDPLSPLH
Formulation:	Liquid. Purified antibody supplied in 1x PBS buffer with 0.09% (w/v) sodium azide and 2% sucrose. <i>Note that this product is shipped as lyophilized powder to China customers.</i>
Conjugation:	Unconjugated
Storage:	Store at -20°C as received.
Stability:	Stable for 12 months from date of receipt.
Predicted Protein Size:	39 kDa
Gene Name:	ISL LIM homeobox 1
Database Link:	NP_002193 Entrez Gene 3670 Human P61371



[View online »](#)

Background:

ISL1 is a member of the LIM/homeodomain family of transcription factors. It binds to the enhancer region of the insulin gene, among others, and may play an important role in regulating insulin gene expression. ISL1 is central to the development of pancreatic cell lineages and may also be required for motor neuron generation. This gene encodes a member of the LIM/homeodomain family of transcription factors. The encoded protein binds to the enhancer region of the insulin gene, among others, and may play an important role in regulating insulin gene expression. The encoded protein is central to the development of pancreatic cell lineages and may also be required for motor neuron generation. Mutations in this gene have been associated with maturity-onset diabetes of the young. Publication Note: This RefSeq record includes a subset of the publications that are available for this gene. Please see the Entrez Gene record to access additional publications.

Synonyms:

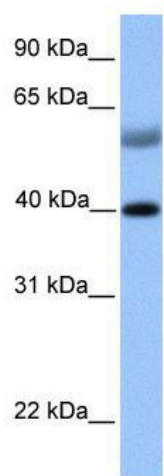
Isl-1; ISLET1

Note:

Immunogen sequence homology: Dog: 100%; Pig: 100%; Rat: 100%; Human: 100%; Mouse: 100%; Sheep: 100%; Bovine: 100%; Rabbit: 100%; Guinea pig: 100%; Horse: 92%; Zebrafish: 85%

Protein Families:

ES Cell Differentiation/IPS, Transcription Factors

Product images:

WB Suggested Anti-ISL1 Antibody Titration: 0.2-1 ug/ml; Positive Control: Human Muscle