

Product datasheet for **TA330252**

Bmp7 Rabbit Polyclonal Antibody

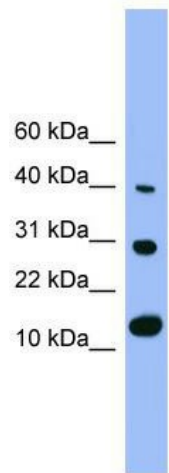
Product data:

Product Type:	Primary Antibodies
Applications:	IHC, WB
Recommended Dilution:	WB, IHC
Reactivity:	Human
Host:	Rabbit
Isotype:	IgG
Clonality:	Polyclonal
Immunogen:	The immunogen for anti-Bmp7 antibody: synthetic peptide corresponding to a region of Rat. Synthetic peptide located within the following region: MVAFFKATEVHLRSIRSTGGKQRSQNRSKTPKNQEALRMASVAENSSSDQ
Formulation:	Liquid. Purified antibody supplied in 1x PBS buffer with 0.09% (w/v) sodium azide and 2% sucrose. <i>Note that this product is shipped as lyophilized powder to China customers.</i>
Purification:	Affinity purified
Conjugation:	Unconjugated
Storage:	Store at -20°C as received.
Stability:	Stable for 12 months from date of receipt.
Predicted Protein Size:	16 kDa
Gene Name:	bone morphogenetic protein 7
Database Link:	NP_001178785 Entrez Gene 655 Human
Background:	The function of Bmp7 remains unknown.
Synonyms:	BMP-7; OP-1; OP1
Note:	Immunogen sequence homology: Human: 100%; Dog: 93%; Pig: 93%; Rat: 93%; Horse: 93%; Mouse: 93%; Bovine: 93%; Rabbit: 92%; Guinea pig: 86%

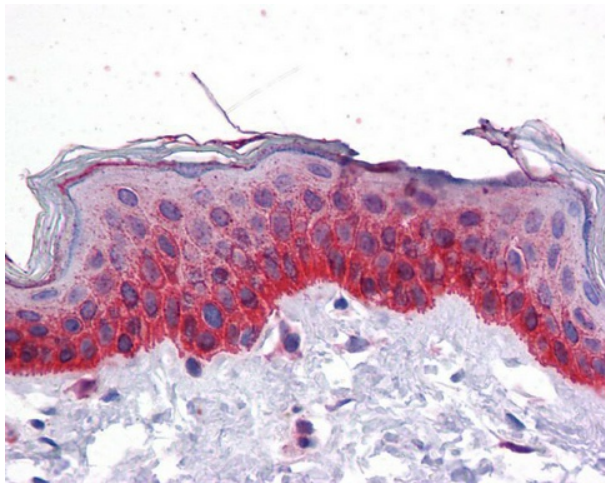


[View online »](#)

Product images:

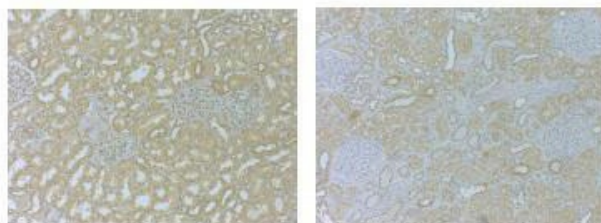


WB Suggested Anti-Bmp7 Antibody Titration: 0.2-1 ug/ml; ELISA Titer: 1:62500; Positive Control: Rat Lung



Human Skin

BMP7



Brown: BMP7
Blue: DAPI

Sample Type : Human kidney (Proteinase K)
Primary Antibody Dilution : 1:1000
Secondary Antibody : Anti-rabbit-HRP
Secondary Antibody Dilution : 1:5000
Color/Signal Descriptions :
Brown: BMP7 Blue: DAPI
Gene Name : Bmp7
Submitted by : Christina Theodoropoulos,