

Product datasheet for **TA330250**

LDB2 Rabbit Polyclonal Antibody

Product data:

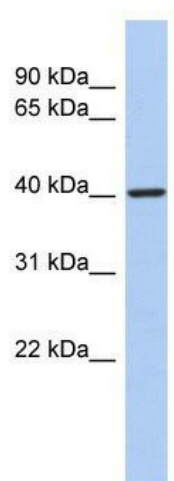
| | |
|-------------------------|---|
| Product Type: | Primary Antibodies |
| Applications: | WB |
| Recommended Dilution: | WB |
| Reactivity: | Human |
| Host: | Rabbit |
| Isotype: | IgG |
| Clonality: | Polyclonal |
| Immunogen: | The immunogen for anti-LDB2 antibody: synthetic peptide directed towards the middle region of human LDB2. Synthetic peptide located within the following region: LENTQYDAANGMDDEEDFNNSPALGNNSPWNSKPPATQETKSENPPPQAS |
| Formulation: | Liquid. Purified antibody supplied in 1x PBS buffer with 0.09% (w/v) sodium azide and 2% sucrose. <i>Note that this product is shipped as lyophilized powder to China customers.</i> |
| Conjugation: | Unconjugated |
| Storage: | Store at -20°C as received. |
| Stability: | Stable for 12 months from date of receipt. |
| Predicted Protein Size: | 43 kDa |
| Gene Name: | LIM domain binding 2 |
| Database Link: | NP_001281 Entrez Gene 9079 Human O43679 |
| Background: | LDB2 belongs to the LDB family. LDB2 binds to the LIM domain of a wide variety of LIM domain-containing transcription factors. LIM domains are required for both inhibitory effects on LIM homeodomain transcription factors and synergistic transcriptional activation events. The inhibitory actions of the LIM domain can often be overcome by the LIM co-regulators known as CLIM2, LDB2 and NLI. LIM homeoproteins and CLIMs are involved in a variety of developmental processes. |
| Synonyms: | CLIM1; LDB-2; LDB1 |



[View online »](#)

Note: Immunogen sequence homology: Pig: 100%; Rat: 100%; Horse: 100%; Human: 100%; Bovine: 100%; Rabbit: 100%; Guinea pig: 100%; Mouse: 93%; Dog: 83%

Product images:



WB Suggested Anti-LDB2 Antibody Titration: 0.2-1 ug/ml; ELISA Titer: 1:312500; Positive Control: Human Small Intestine