

Product datasheet for **TA330248**

Tle5 Rabbit Polyclonal Antibody

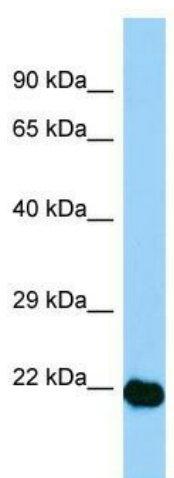
Product data:

Product Type:	Primary Antibodies
Applications:	WB
Recommended Dilution:	WB
Reactivity:	Mouse
Host:	Rabbit
Isotype:	IgG
Clonality:	Polyclonal
Immunogen:	The immunogen for Anti-Aes antibody is: synthetic peptide directed towards the N-terminal region of Mouse Aes. Synthetic peptide located within the following region: QSRHSGSSHLPQQLKFTTSDSCDRKDEFQLLQAQYHSLKLECDKLASEK
Formulation:	Liquid. Purified antibody supplied in 1x PBS buffer with 0.09% (w/v) sodium azide and 2% sucrose. <i>Note that this product is shipped as lyophilized powder to China customers.</i>
Conjugation:	Unconjugated
Storage:	Store at -20°C as received.
Stability:	Stable for 12 months from date of receipt.
Predicted Protein Size:	22 kDa
Gene Name:	amino-terminal enhancer of split
Database Link:	NP_034477 Entrez Gene 14797 Mouse P63002
Background:	Aes acts as dominant repressor towards other family members. Aes inhibits NF-kappa-B-regulated gene expression and may be required for the initiation and maintenance of the differentiated state .
Synonyms:	AES-1; AES-2; ESP1; GRG; GRG5; TLE5
Note:	Immunogen sequence homology: Pig: 100%; Rat: 100%; Human: 100%; Mouse: 100%; Bovine: 100%; Guinea pig: 100%



[View online »](#)

Product images:



WB Suggested Anti-Aes Antibody; Titration: 1.0 ug/ml; Positive Control: Mouse Stomach