

Product datasheet for **TA330247**

HNF1 beta (HNF1B) Rabbit Polyclonal Antibody

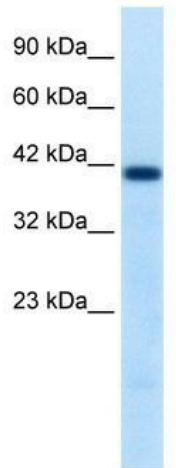
Product data:

Product Type:	Primary Antibodies
Applications:	WB
Recommended Dilution:	WB
Reactivity:	Human, Rat
Host:	Rabbit
Isotype:	IgG
Clonality:	Polyclonal
Immunogen:	The immunogen for anti-HNF1B antibody: synthetic peptide directed towards the N terminal of human HNF1B. Synthetic peptide located within the following region: LETLPSPGSGAEPDTKPVFHTLTNGHAKGRLSGDEGSEDGDDYDTPPIL
Formulation:	Liquid. Purified antibody supplied in 1x PBS buffer with 0.09% (w/v) sodium azide and 2% sucrose. <i>Note that this product is shipped as lyophilized powder to China customers.</i>
Conjugation:	Unconjugated
Storage:	Store at -20°C as received.
Stability:	Stable for 12 months from date of receipt.
Predicted Protein Size:	45 kDa
Gene Name:	HNF1 homeobox B
Database Link:	NP_000449 Entrez Gene 25640 Rat Entrez Gene 6928 Human P35680
Background:	Hepatocyte Nuclear Factor 1-. (HNF-1., Homeoprotein LFB3, Transcription factor 2, TCF2, Variant hepatic nuclear factor) is a liver-specific factor of the homeobox-containing basic helix-turn-helix family. The TCF2 protein is believed to form heterodimers with another liver-specific member of this transcription factor family, TCF1; depending on the TCF2 isoform, the result may be to activate or inhibit transcription of target genes. Mutation of TCF2 that disrupts normal function has been identified as the cause of MODY5 (Maturity-Onset of Diabetes, Type 5). A third human transcript variant is believed to exist based on such a variant in the rat: however, to date such an mRNA species has not been isolated.



[View online »](#)

Synonyms:	FJHN; HNF-1-beta; HNF-1B; HNF1beta; HNF2; HPC11; LF-B3; LFB3; MODY5; TCF-2; TCF2; VHNF1
Note:	Immunogen sequence homology: Dog: 100%; Pig: 100%; Rat: 100%; Horse: 100%; Human: 100%; Mouse: 100%; Bovine: 100%; Zebrafish: 100%; Guinea pig: 100%
Protein Families:	Druggable Genome, Embryonic stem cells, ES Cell Differentiation/IPS, Transcription Factors
Protein Pathways:	Maturity onset diabetes of the young

Product images:

WB Suggested Antibody Titration: 0.2-1 ug/ml;
Positive Control: Jurkat