

## Product datasheet for **TA330245**

### **Pit1 (POU1F1) Rabbit Polyclonal Antibody**

#### **Product data:**

Product Type:	Primary Antibodies
Applications:	WB
Recommended Dilution:	WB
Reactivity:	Human
Host:	Rabbit
Isotype:	IgG
Clonality:	Polyclonal
Immunogen:	The immunogen for anti-POU1F1 antibody: synthetic peptide directed towards the middle region of human POU1F1. Synthetic peptide located within the following region: KRRTTISIAAKDALERHFGEQNKPSSQEIMRMAEELNLEKEVVRVWFCNR
Formulation:	Liquid. Purified antibody supplied in 1x PBS buffer with 0.09% (w/v) sodium azide and 2% sucrose.
Conjugation:	Unconjugated
Storage:	Store at -20°C as received.
Stability:	Stable for 12 months from date of receipt.
Predicted Protein Size:	33 kDa
Gene Name:	POU class 1 homeobox 1
Database Link:	<a href="#">NP_000297</a> <a href="#">Entrez Gene 5449 Human P28069</a>



[View online »](#)

**Background:**

PIT1 is a pituitary-specific transcription factor responsible for pituitary development and hormone expression in mammals and is a member of the POU family of transcription factors that regulate mammalian development. The POU family is so named because the first 3 members identified were PIT1 and OCT1 of mammals, and Unc-86 of *C. elegans*. PIT1 contains 2 protein domains, termed POU-specific and POU-homeo, which are both necessary for high affinity DNA binding on genes encoding growth hormone and prolactin. PIT1 is also important for regulation of the genes encoding prolactin and thyroid-stimulating hormone beta subunit by thyrotropin-releasing hormone and cyclic AMP. This gene encodes a member of the POU family of transcription factors that regulate mammalian development. The protein regulates expression of several genes involved in pituitary development and hormone expression. Mutations in this genes result in combined pituitary hormone deficiency. Multiple transcript variants encoding different isoforms have been found for this gene.

**Synonyms:**

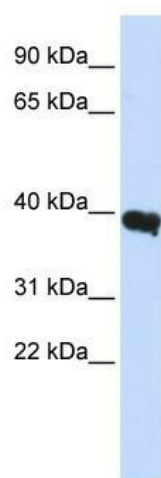
CPHD1; GHF-1; Pit-1; PIT1; POU1F1a

**Note:**

Immunogen sequence homology: Dog: 100%; Pig: 100%; Goat: 100%; Horse: 100%; Human: 100%; Sheep: 100%; Bovine: 100%; Rabbit: 100%; Guinea pig: 100%; Rat: 93%; Mouse: 86%

**Protein Families:**

Druggable Genome, Transcription Factors

**Product images:**

WB Suggested Anti-POU1F1 Antibody Titration:  
0.2-1 ug/ml; ELISA Titer: 1:312500; Positive  
Control: Human Liver