

## Product datasheet for **TA330243**

### MMP19 Rabbit Polyclonal Antibody

#### Product data:

Product Type:	Primary Antibodies
Applications:	IHC, WB
Recommended Dilution:	WB, IHC
Reactivity:	Human
Host:	Rabbit
Isotype:	IgG
Clonality:	Polyclonal
Immunogen:	The immunogen for anti-MMP19 antibody: synthetic peptide directed towards the N terminal of human MMP19. Synthetic peptide located within the following region: ALRAFQEASELPVSGQLDDATRARMRQPRCGLEDPFNQKTLKYLKLLGRWR
Formulation:	Liquid. Purified antibody supplied in 1x PBS buffer with 0.09% (w/v) sodium azide and 2% sucrose. <i>Note that this product is shipped as lyophilized powder to China customers.</i>
Conjugation:	Unconjugated
Storage:	Store at -20°C as received.
Stability:	Stable for 12 months from date of receipt.
Predicted Protein Size:	56 kDa
Gene Name:	matrix metalloproteinase 19
Database Link:	<a href="#">NP_002420</a> <a href="#">Entrez Gene 4327 Human</a> <a href="#">Q99542</a>
Background:	Proteins of the matrix metalloproteinase (MMP) family are involved in the breakdown of extracellular matrix in normal physiological processes, such as embryonic development, reproduction, and tissue remodeling. They are also involved in disease processes, such as arthritis and metastasis. Most MMP's are secreted as inactive proproteins which are activated when cleaved by extracellular proteinases. The function of MMP-19 has not been determined. This gene corresponding to this protein was previously referred to as MMP18 but has been renamed matrix metalloproteinase 19 (MMP19). Multiple transcript variants encoding distinct isoforms have been identified for this gene.



[View online »](#)

**Synonyms:** MMP18; RASI-1

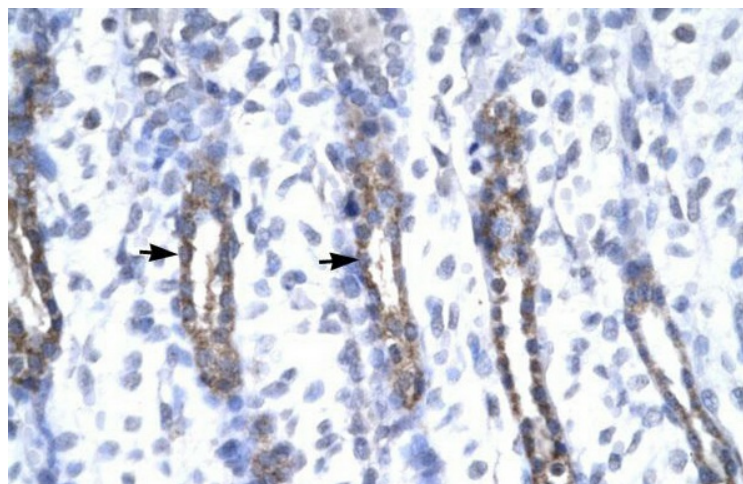
**Note:** Immunogen sequence homology: Dog: 100%; Rat: 100%; Human: 100%; Pig: 93%; Horse: 93%; Bovine: 93%; Rabbit: 93%; Mouse: 86%

**Protein Families:** Protease, Secreted Protein

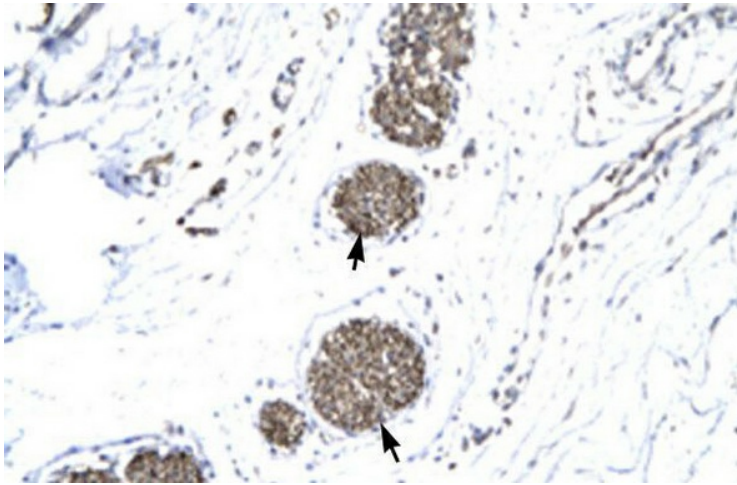
**Product images:**



WB Suggested Anti-MMP19 Antibody Titration: 0.2-1 ug/ml; Positive Control: HepG2 cell lysate

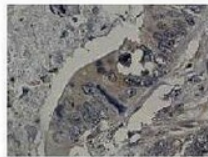


Human urinary bladder

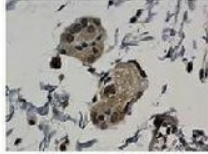


Human urinary bladder

MMP-19



Sample: Human colorectal cancer



Control: Human Small Intestine

Brown: Primary antibody  
Blue: DAPI

See IHC 3 Data and Customer Feedback for more information

Sample Type : Control-Human small intestine,  
Sample-Human colorectal cancer  
Primary Antibody Dilution : 1:100  
Secondary Antibody : Biotinylated pig anti-rabbit+streptavidin-HRP  
Color/Signal Descriptions : MMP19: Brown  
DAPI:Blue  
Gene Name : MMP19 Submitted by