

Product datasheet for **TA330241**

FOX E3 Rabbit Polyclonal Antibody

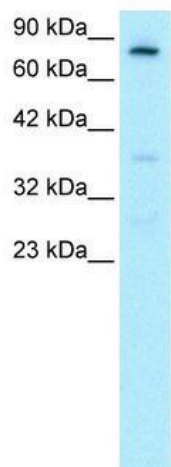
Product data:

Product Type:	Primary Antibodies
Applications:	IHC, WB
Recommended Dilution:	WB, IHC
Reactivity:	Human
Host:	Rabbit
Isotype:	IgG
Clonality:	Polyclonal
Immunogen:	The immunogen for anti-FOX E3 antibody: synthetic peptide directed towards the C terminal of human FOX E3. Synthetic peptide located within the following region: PEPPCCAAPDAAAAAFPPCAAAASPLYQVPDRLVLPATRPGPGPLPAE
Formulation:	Liquid. Purified antibody supplied in 1x PBS buffer with 0.09% (w/v) sodium azide and 2% sucrose.
Conjugation:	Unconjugated
Storage:	Store at -20°C as received.
Stability:	Stable for 12 months from date of receipt.
Predicted Protein Size:	33 kDa
Gene Name:	forkhead box E3
Database Link:	NP_036318 Entrez Gene 2301 Human Q13461
Background:	Forkhead Box Protein E3 (FOX E3, forkhead-related protein FKHL12, forkhead-related transcription factor 8) is a forkhead/winged helix transcription factor, which is expressed in the developing lens from the start of lens placode induction and becomes restricted to the anterior proliferating cells when lens fiber differentiation begins.
Synonyms:	FKHL12; FREAC8
Note:	Immunogen sequence homology: Human: 100%

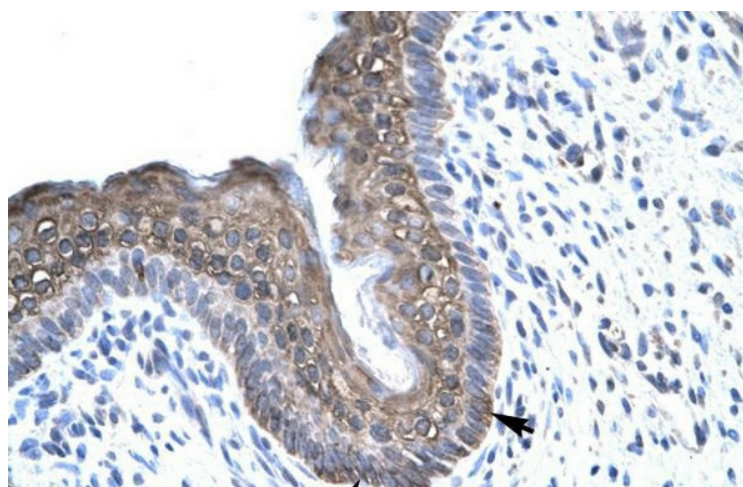


[View online »](#)

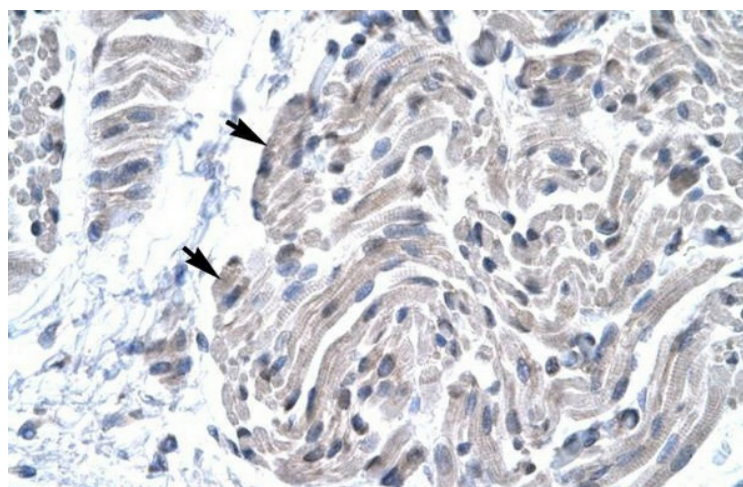
Product images:



WB Suggested Anti-FOXE3 Antibody Titration: 0.2-1 ug/ml; Positive Control: HepG2 cell lysate



Human Spermatophore



Human Muscle