

Product datasheet for **TA330240**

FOXL1 Rabbit Polyclonal Antibody

Product data:

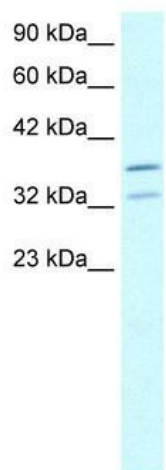
Product Type:	Primary Antibodies
Applications:	IHC, WB
Recommended Dilution:	WB, IHC
Reactivity:	Human, Mouse
Host:	Rabbit
Isotype:	IgG
Clonality:	Polyclonal
Immunogen:	The immunogen for anti-FOXL1 antibody: synthetic peptide directed towards the N terminal of human FOXL1. Synthetic peptide located within the following region: HLFDPRLPALAASPLYLYGPERPGLPLAFAPAAALAASGRAETPQKPPY
Formulation:	Liquid. Purified antibody supplied in 1x PBS buffer with 0.09% (w/v) sodium azide and 2% sucrose. <i>Note that this product is shipped as lyophilized powder to China customers.</i>
Conjugation:	Unconjugated
Storage:	Store at -20°C as received.
Stability:	Stable for 12 months from date of receipt.
Predicted Protein Size:	36 kDa
Gene Name:	forkhead box L1
Database Link:	NP_005241 Entrez Gene 14241 Mouse Entrez Gene 2300 Human Q12952
Background:	FOXL1 is a member of the forkhead family. The forkhead domain is a monomeric DNA binding motif that defines a rapidly growing family of eukaryotic transcriptional regulators. Genetic and biochemical data suggest a central role in embryonic development for forkhead proteins.
Synonyms:	FKH6; FKHL11; FREAC7
Note:	Immunogen sequence homology: Dog: 100%; Pig: 100%; Horse: 100%; Human: 100%; Bovine: 100%; Rabbit: 92%; Rat: 86%; Mouse: 86%



[View online »](#)

Protein Families: Transcription Factors

Product images:



WB Suggested Anti-FOXL1 Antibody Titration: 2.5 ug/ml; Positive Control: Human Liver



Human Muscle