

## Product datasheet for **TA330237**

### SCMH1 Rabbit Polyclonal Antibody

#### Product data:

Product Type:	Primary Antibodies
Applications:	WB
Recommended Dilution:	WB
Reactivity:	Human
Host:	Rabbit
Isotype:	IgG
Clonality:	Polyclonal
Immunogen:	The immunogen for anti-SCMH1 antibody: synthetic peptide directed towards the middle region of human SCM1. Synthetic peptide located within the following region: KTAEPLKFPKRGPKPGSKRKPRTLLNPPASPTTSTPEPDTSTVPQDAA
Formulation:	Liquid. Purified antibody supplied in 1x PBS buffer with 0.09% (w/v) sodium azide and 2% sucrose. <i>Note that this product is shipped as lyophilized powder to China customers.</i>
Conjugation:	Unconjugated
Storage:	Store at -20°C as received.
Stability:	Stable for 12 months from date of receipt.
Predicted Protein Size:	65 kDa
Gene Name:	sex comb on midleg homolog 1 (Drosophila)
Database Link:	<a href="#">NP_036368</a> <a href="#">Entrez Gene 22955 Human</a> <a href="#">Q96GD3</a>
Background:	SCMH1 is a component of the Polycomb group (PcG) multiprotein PRC1 complex, a complex required to maintain the transcriptionally repressive state of many genes, including Hox genes, throughout development. PcG PRC1 complex acts via chromatin remodeling and modification of histones; it mediates monoubiquitination of histone H2A 'Lys-119', rendering chromatin heritably changed in its expressibility.
Synonyms:	Scml3

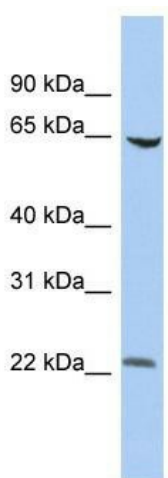


[View online »](#)

**Note:** Immunogen sequence homology: Dog: 100%; Pig: 100%; Rat: 100%; Horse: 100%; Human: 100%; Mouse: 100%; Bovine: 100%; Rabbit: 100%; Guinea pig: 100%; Zebrafish: 92%; Yeast: 91%

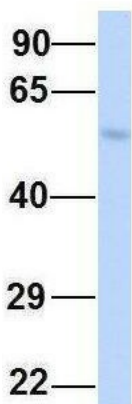
**Protein Families:** Transcription Factors

**Product images:**



WB Suggested Anti-SCMH1 Antibody Titration: 0.2-1 ug/ml; ELISA Titer: 1:62500; Positive Control: HT1080 cell lysate

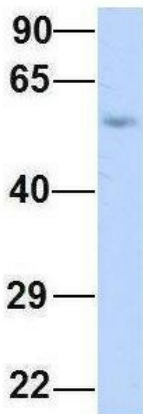
**SCMH1**



Rabbit Anti-SCMH1  
Sample Type: Human Fetal Lung  
Antibody Concentration: 1ug/mL

Host: Rabbit; Target Name: SCM1; Sample Tissue: Human Fetal Lung; Antibody Dilution: 1.0 ug/ml

# SCMH1



Rabbit Anti-SCMH1  
Sample Type: Human Fetal Heart  
Antibody Concentration: 1ug/mL

Host: Rabbit; Target Name: SCM1; Sample  
Tissue: Human Fetal Heart; Antibody Dilution: 1.0  
ug/ml