

## Product datasheet for **TA330236**

### FOXF1 Rabbit Polyclonal Antibody

#### Product data:

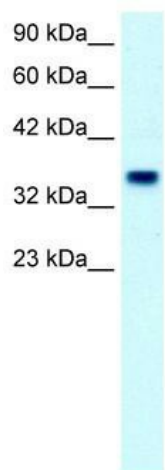
Product Type:	Primary Antibodies
Applications:	IHC, WB
Recommended Dilution:	WB, IHC
Reactivity:	Human
Host:	Rabbit
Isotype:	IgG
Clonality:	Polyclonal
Immunogen:	The immunogen for anti-FOXF1 antibody: synthetic peptide directed towards the C terminal of human FOXF1. Synthetic peptide located within the following region: PCNPAANPLSGSLSTHSLEQPYLHQNSHNAPAEHQIPRYHSQSPSMCDR
Formulation:	Liquid. Purified antibody supplied in 1x PBS buffer with 0.09% (w/v) sodium azide and 2% sucrose. <i>Note that this product is shipped as lyophilized powder to China customers.</i>
Conjugation:	Unconjugated
Storage:	Store at -20°C as received.
Stability:	Stable for 12 months from date of receipt.
Predicted Protein Size:	38 kDa
Gene Name:	forkhead box F1
Database Link:	<a href="#">NP_001442</a> <a href="#">Entrez Gene 2294 Human Q12946</a>
Background:	This gene belongs to the forkhead family of transcription factors which is characterized by a distinct forkhead domain. The specific function of this gene has not yet been determined; however, it may play a role in the regulation of pulmonary genes as well as embryonic development.
Synonyms:	ACDMPV; FKHL5; FREAC1
Note:	Immunogen sequence homology: Horse: 100%; Human: 100%; Rabbit: 100%; Dog: 92%; Pig: 92%; Rat: 92%; Mouse: 92%; Bovine: 92%; Guinea pig: 92%



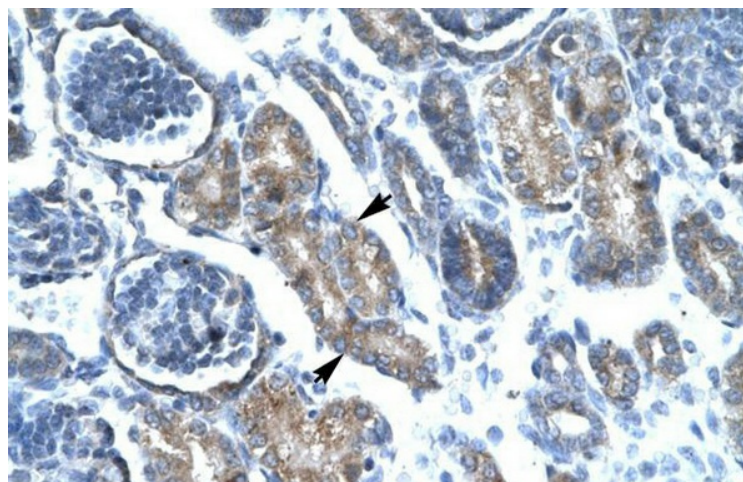
[View online »](#)

Protein Families: Transcription Factors

### Product images:



WB Suggested Anti-FOXF1 Antibody Titration: 2.5 ug/ml; Positive Control: Human Placenta



Human kidney