

Product datasheet for **TA330233**

Atf6 Rabbit Polyclonal Antibody

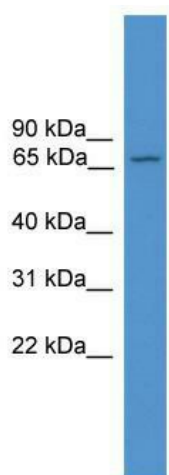
Product data:

Product Type:	Primary Antibodies
Applications:	IHC, WB
Recommended Dilution:	WB, IHC
Reactivity:	Mouse
Host:	Rabbit
Isotype:	IgG
Clonality:	Polyclonal
Immunogen:	The immunogen for anti-Atf6 antibody: synthetic peptide corresponding to a region of Mouse. Synthetic peptide located within the following region: QIDCQVMDTRILHIKSSSVPPYLRDHQRNQTSTFFGSPPTTTETTHVST
Formulation:	Liquid. Purified antibody supplied in 1x PBS buffer with 0.09% (w/v) sodium azide and 2% sucrose. <i>Note that this product is shipped as lyophilized powder to China customers.</i>
Conjugation:	Unconjugated
Storage:	Store at -20°C as received.
Stability:	Stable for 12 months from date of receipt.
Predicted Protein Size:	72 kDa
Gene Name:	activating transcription factor 6
Database Link:	NP_001074773 Entrez Gene 226641 Mouse F6VAN0
Background:	The function of Atf6 remains unknown.
Synonyms:	ATF6-alpha; ATF6A
Note:	Immunogen sequence homology: Dog: 100%; Pig: 100%; Horse: 100%; Human: 100%; Bovine: 100%; Rabbit: 100%; Guinea pig: 100%; Rat: 92%; Mouse: 85%

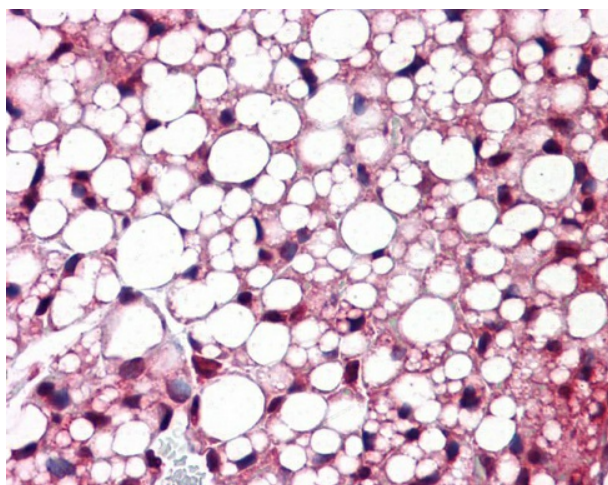


[View online »](#)

Product images:



WB Suggested Anti-Atf6 Antibody Titration: 0.2-1 ug/ml; ELISA Titer: 1:62500; Positive Control: Mouse Heart



Mouse adipose