

Product datasheet for **TA330229**

PQBP1 Rabbit Polyclonal Antibody

Product data:

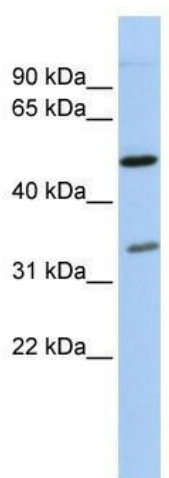
Product Type:	Primary Antibodies
Applications:	WB
Recommended Dilution:	WB
Reactivity:	Human
Host:	Rabbit
Isotype:	IgG
Clonality:	Polyclonal
Immunogen:	The immunogen for anti-PQBP1 antibody: synthetic peptide directed towards the middle region of human PQBP1. Synthetic peptide located within the following region: LVSWLSPHDPNSVWTKSAKLRSSNADAEKLRSHDKSDRGHDKSDRSRSH
Formulation:	Liquid. Purified antibody supplied in 1x PBS buffer with 0.09% (w/v) sodium azide and 2% sucrose. <i>Note that this product is shipped as lyophilized powder to China customers.</i>
Conjugation:	Unconjugated
Storage:	Store at -20°C as received.
Stability:	Stable for 12 months from date of receipt.
Predicted Protein Size:	30 kDa
Gene Name:	polyglutamine binding protein 1
Database Link:	NP_001027555 Entrez Gene 10084 Human O60828
Background:	PQBP1 is a nuclear polyglutamine-binding protein that contains a WW domainPQBP1 is a nuclear polyglutamine-binding protein that contains a WW domain (Waragai et al., 1999 [PubMed 10332029]). [supplied by OMIM]
Synonyms:	MRX2; MRX55; MRXS3; MRXS8; NPW38; RENS1; SHS
Note:	Immunogen sequence homology: Dog: 100%; Pig: 100%; Rat: 100%; Horse: 100%; Human: 100%; Bovine: 100%; Guinea pig: 100%; Rabbit: 93%
Protein Families:	Transcription Factors



[View online »](#)

Protein Pathways: Spliceosome

Product images:



WB Suggested Anti-PQBP1 Antibody Titration:
0.2-1 ug/ml; ELISA Titer: 1:62500; Positive Control:
OVCAR-3 cell lysate