

## Product datasheet for **TA330228**

### TFEC Rabbit Polyclonal Antibody

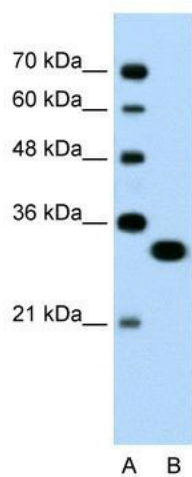
#### Product data:

Product Type:	Primary Antibodies
Applications:	WB
Recommended Dilution:	WB
Reactivity:	Human
Host:	Rabbit
Isotype:	IgG
Clonality:	Polyclonal
Immunogen:	The immunogen for anti-TFEC antibody: synthetic peptide directed towards the N terminal of human TFEC. Synthetic peptide located within the following region: MESSFKEEGADSPLLMQRTLSGSILDVYSGEQGISPINMGLTSASCPSSL
Formulation:	Liquid. Purified antibody supplied in 1x PBS buffer with 0.09% (w/v) sodium azide and 2% sucrose. <i>Note that this product is shipped as lyophilized powder to China customers.</i>
Conjugation:	Unconjugated
Storage:	Store at -20°C as received.
Stability:	Stable for 12 months from date of receipt.
Predicted Protein Size:	35 kDa
Gene Name:	transcription factor EC
Database Link:	<a href="#">NP_001018068</a> <a href="#">Entrez Gene 22797 Human</a> <a href="#">O14948</a>
Background:	TFEC is an activator of transcription with two separate activation domains.
Synonyms:	bHLHe34; hTFEC-L; TCFEC; TFE-C; TFEC-L; TFEC
Note:	Immunogen sequence homology: Dog: 100%; Pig: 100%; Rat: 100%; Human: 100%; Horse: 93%; Mouse: 93%; Bovine: 93%; Guinea pig: 86%
Protein Families:	Druggable Genome, Transcription Factors



[View online »](#)

## Product images:



WB Suggested Anti-TFEC Antibody Titration: 0.2-1 ug/ml; Positive Control: Jurkat cell lysate