

## Product datasheet for **TA330223**

### Pea3 (ETV4) Rabbit Polyclonal Antibody

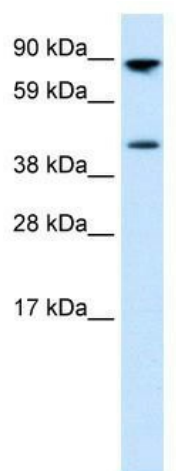
#### Product data:

Product Type:	Primary Antibodies
Applications:	WB
Recommended Dilution:	WB
Reactivity:	Human
Host:	Rabbit
Isotype:	IgG
Clonality:	Polyclonal
Immunogen:	The immunogen for anti-ETV4 antibody: synthetic peptide directed towards the middle region of human ETV4. Synthetic peptide located within the following region: HSSVFQQPLDICHSFTSQGGGREPLPAPYQHQLSEPCPPYPQQSFKQEYH
Formulation:	Liquid. Purified antibody supplied in 1x PBS buffer with 0.09% (w/v) sodium azide and 2% sucrose. <i>Note that this product is shipped as lyophilized powder to China customers.</i>
Conjugation:	Unconjugated
Storage:	Store at -20°C as received.
Stability:	Stable for 12 months from date of receipt.
Predicted Protein Size:	54 kDa
Gene Name:	ETS variant 4
Database Link:	<a href="#">NP_001977</a> <a href="#">Entrez Gene 2118 Human P43268</a>
Background:	The protein encoded by the ETV4 gene is known to play a role in ovarian and breast malignancies as well as in the early stage of colorectal carcinogenesis.
Synonyms:	E1A-F; E1AF; PEA3; PEAS3
Note:	Immunogen sequence homology: Pig: 100%; Rat: 100%; Human: 100%; Mouse: 100%; Bovine: 100%; Horse: 93%; Rabbit: 93%; Dog: 86%
Protein Families:	Druggable Genome, Transcription Factors



[View online »](#)

## Product images:



WB Suggested Anti-ETV4 Antibody Titration: 0.2-1 ug/ml; ELISA Titer: 1:312500; Positive Control: Human Small Intestine