

Product datasheet for TA330222

NR2E3 Rabbit Polyclonal Antibody

Product data:

Product Type:	Primary Antibodies
Applications:	WB
Recommended Dilution:	WB
Reactivity:	Human
Host:	Rabbit
Isotype:	IgG
Clonality:	Polyclonal
Immunogen:	The immunogen for Anti-NR2E3 antibody is: synthetic peptide directed towards the middle region of Human NR2E3. Synthetic peptide located within the following region: ARALGHHFMASLITAETCAKLEPEDADENIDVTSNDPEFPSSPYSSSSPC
Formulation:	Liquid. Purified antibody supplied in 1x PBS buffer with 0.09% (w/v) sodium azide and 2% sucrose. <i>Note that this product is shipped as lyophilized powder to China customers.</i>
Conjugation:	Unconjugated
Storage:	Store at -20°C as received.
Stability:	Stable for 12 months from date of receipt.
Predicted Protein Size:	40 kDa
Gene Name:	nuclear receptor subfamily 2 group E member 3
Database Link:	NP_057430 Entrez Gene 10002 Human Q9Y5X4
Background:	This protein is part of a large family of nuclear receptor transcription factors involved in signaling pathways. Nuclear receptors have been shown to regulate pathways involved in embryonic development, as well as in maintenance of proper cell function in adults. Members of this family are characterized by discrete domains that function in DNA and ligand binding. This gene encodes a retinal nuclear receptor that is a ligand-dependent transcription factor. Defects in this gene are a cause of enhanced S cone syndrome. Alternatively spliced transcript variants encoding different isoforms have been identified.



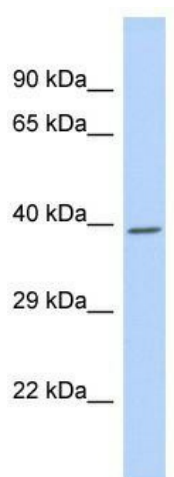
[View online »](#)

Synonyms: ESCS; PNR; rd7; RNR; RP37

Note: Immunogen sequence homology: Horse: 100%; Human: 100%; Bovine: 100%; Pig: 93%; Rat: 93%; Mouse: 93%; Zebrafish: 93%; Guinea pig: 93%

Protein Families: Druggable Genome, Nuclear Hormone Receptor, Transcription Factors

Product images:



Host: Rabbit; Target Name: NR2E3; Sample Tissue: Fetal Heart lysates; Antibody Dilution: 1.0ug/ml